

For Research Use Only

# GPR161 Polyclonal antibody

Catalog Number: 29328-1-AP



## Basic Information

<b>Catalog Number:</b> 29328-1-AP	<b>GenBank Accession Number:</b> BC028163	<b>Purification Method:</b> Antigen affinity purification
<b>Size:</b> 400 µg/ml	<b>GeneID (NCBI):</b> 23432	<b>Recommended Dilutions:</b> WB 1:500-1:2000 IF 1:200-1:800
<b>Source:</b> Rabbit	<b>UNIPROT ID:</b> Q8N6U8	
<b>Isotype:</b> IgG	<b>Full Name:</b> G protein-coupled receptor 161	
<b>Immunogen Catalog Number:</b> AG30998	<b>Calculated MW:</b> 529 aa, 59 kDa	
	<b>Observed MW:</b> 70 kDa	

## Applications

<b>Tested Applications:</b> IF/ICC, WB, ELISA	<b>Positive Controls:</b>
<b>Species Specificity:</b> Human, mouse, rat	WB : mouse brain tissue, rat brain tissue IF : ARPE-19 cells, hTERT-RPE1 cells

## Background Information

GPR161 (also known as RE2) is an orphan G protein-coupled receptor and plays an important role in the Hh pathway. In the absence of Hh signals, GPR161 localizes to primary cilia and keeps the downstream GLI transcription factors in their repressor forms (PMID: 26305592). Ciliary localization of GPR161 requires TULP3 and the IFT-A complex. In the presence of SHH, GPR161 is removed from primary cilia and is internalized into recycling endosomes, preventing its activity and allowing activation of the Shh signaling. GPR161 has a calculated molecular mass of 59 kDa. The 70-kDa band detected by this antibody probably represents a modified version of GPR161 (PMID: 18250320).

## Storage

**Storage:**  
Store at -20°C. Stable for one year after shipment.  
**Storage Buffer:**  
PBS with 0.02% sodium azide and 50% glycerol pH 7.3.  
Aliquoting is unnecessary for -20°C storage

For technical support and original validation data for this product please contact:

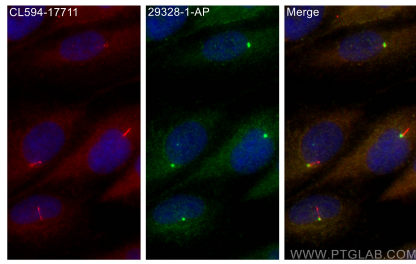
T: 4006900926

E: [Proteintech-CN@ptglab.com](mailto:Proteintech-CN@ptglab.com)

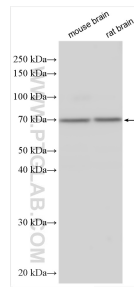
W: [ptgcn.com](http://ptgcn.com)

This product is exclusively available under Proteintech Group brand and is not available to purchase from any other manufacturer.

## Selected Validation Data



Immunofluorescent analysis of (-20°C Methanol) fixed ARPE-19 cells using GPR161 antibody (29328-1-AP) at dilution of 1:400 and CoraLite@488-Conjugated AffiniPure Goat Anti-Rabbit IgG(H+L), CoraLite@594 ARL13B antibody (CL594-17711, red).



Various lysates were subjected to SDS PAGE followed by western blot with 29328-1-AP (GPR161 antibody) at dilution of 1:1000 incubated at room temperature for 1.5 hours.