

SPATA2 Polyclonal antibody

Catalog Number: 29321-1-AP

Basic Information

Catalog Number: 29321-1-AP	GenBank Accession Number: BC009481	Purification Method: Antigen affinity purification
Size: 600 µg/ml	GeneID (NCBI): 9825	Recommended Dilutions: WB 1:2000-1:10000
Source: Rabbit	UNIPROT ID: Q9UM82	IHC 1:50-1:500
Isotype: IgG	Full Name: spermatogenesis associated 2	IF/ICC 1:50-1:500
Immunogen Catalog Number: AG30773	Calculated MW: 58 kDa	
	Observed MW: 58-60 kDa	

Applications

Tested Applications: IF/ICC, IHC, WB, ELISA	Positive Controls:
Species Specificity: Human, mouse, rat	WB : mouse testis tissue, rat testis tissue
Note-IHC: suggested antigen retrieval with TE buffer pH 9.0; (*) Alternatively, antigen retrieval may be performed with citrate buffer pH 6.0	IHC : mouse lung tissue,
	IF/ICC : HeLa cells,

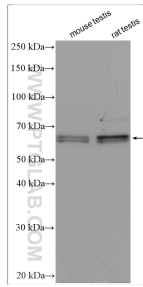
Background Information

The protein SPATA2 (spermatogenesis-associated protein 2) was initially shown to be highly expressed in testicular Sertoli cells, and these early reports suggested SPATA2 to play a role in spermatogenesis. More recently, it was discussed to be involved in the predisposition for psoriasis. SPATA2 is required for TNF-induced cell death. SPATA2 has a potential role during pancreatic development and β -cell proliferation.(PMID: 20119533/PMID: 27458237)

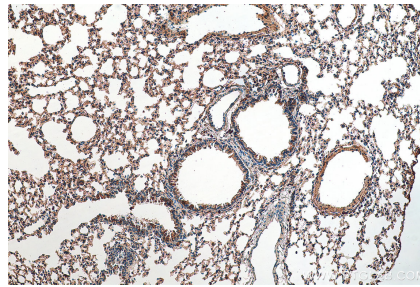
Storage

Storage:
Store at -20°C.
Storage Buffer:
PBS with 0.02% sodium azide and 50% glycerol pH 7.3.
Aliquoting is unnecessary for -20°C storage

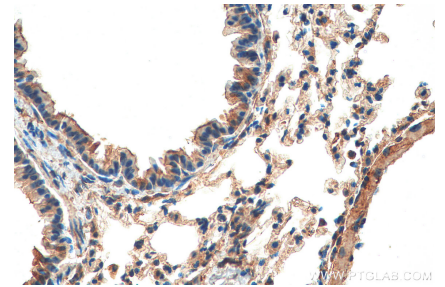
Selected Validation Data



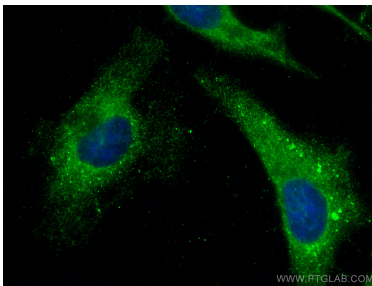
Various lysates were subjected to SDS PAGE followed by western blot with 29321-1-AP (SPATA2 antibody) at dilution of 1:5000 incubated at room temperature for 1.5 hours.



Immunohistochemical analysis of paraffin-embedded mouse lung tissue slide using 29321-1-AP (SPATA2 antibody) at dilution of 1:200 (under 10x lens). Heat mediated antigen retrieval with Tris-EDTA buffer (pH 9.0).



Immunohistochemical analysis of paraffin-embedded mouse lung tissue slide using 29321-1-AP (SPATA2 antibody) at dilution of 1:200 (under 40x lens). Heat mediated antigen retrieval with Tris-EDTA buffer (pH 9.0).



Immunofluorescent analysis of (-20°C Ethanol) fixed HeLa cells using SPATA2 antibody (29321-1-AP) at dilution of 1:200 and CoraLite®488-Conjugated AffiniPure Goat Anti-Rabbit IgG(H+L).