

For Research Use Only

S1PR1/EDG1 Polyclonal antibody

Catalog Number: 29318-1-AP

2 Publications



Basic Information

Catalog Number:

29318-1-AP

Size:

750 ug/ml

Source:

Rabbit

Isotype:

IgG

Immunogen Catalog Number:

AG28083

GenBank Accession Number:

BC018650

GeneID (NCBI):

1901

UNIPROT ID:

P21453

Full Name:

sphingosine-1-phosphate receptor 1

Calculated MW:

43 kDa

Observed MW:

45-50 kDa

Purification Method:

Antigen affinity purification

Recommended Dilutions:

WB 1:500-1:2000

Applications

Tested Applications:

WB, ELISA

Cited Applications:

WB

Species Specificity:

human, mouse

Cited Species:

human, rat

Positive Controls:

WB : SH-SY5Y cells, mouse brain tissue, mouse lung tissue

Background Information

S1PR1 (sphingosine-1-phosphate receptor 1), also known as S1P1 or EDG1, is one of five G-protein-coupled receptors for sphingosine-1-phosphate (S1P) (PMID: 18787560). S1P1 and its receptors have important regulatory functions in normal physiology and disease processes, particularly involving the immune, central nervous, and cardiovascular systems (PMID: 21339489). S1PR1 is widely expressed in various cell types, including endothelial cells and lymphocytes (PMID: 14737169). S1P-S1PR1 plays a major role in lymphocyte egress and chemotaxis, cell proliferation and survival, and tumor angiogenesis and metastasis (PMID: 21102457).

Notable Publications

Author	Pubmed ID	Journal	Application
Yuqing Liu	39620014	Food Sci Nutr	WB
Yuefeng Zhang	36643043	J Clin Transl Hepatol	WB

Storage

Storage:

Store at -20°C. Stable for one year after shipment.

Storage Buffer:

PBS with 0.02% sodium azide and 50% glycerol pH 7.3.

Aliquoting is unnecessary for -20°C storage

For technical support and original validation data for this product please contact:

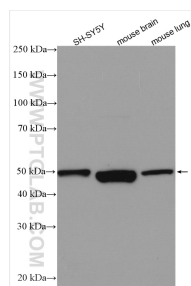
T: 4006900926

E: Proteintech-CN@ptglab.com

W: ptgcn.com

This product is exclusively available under Proteintech Group brand and is not available to purchase from any other manufacturer.

Selected Validation Data



Various lysates were subjected to SDS PAGE followed by western blot with 29318-1-AP (S1PR1 antibody) at dilution of 1:1000 incubated at room temperature for 1.5 hours.