

For Research Use Only

METTL3 Polyclonal antibody

Catalog Number: 29314-1-AP



Basic Information

Catalog Number: 29314-1-AP	GenBank Accession Number: BC001650	Purification Method: Antigen affinity purification
Size: 300 µg/ml	GeneID (NCBI): 56339	Recommended Dilutions: WB 1:500-1:3000 IHC 1:400-1:1600
Source: Rabbit	UNIPROT ID: Q86U44	
Isotype: IgG	Full Name: methyltransferase like 3	
Immunogen Catalog Number: AG30638	Calculated MW: 64 kDa	
	Observed MW: 65-70 kDa	

Applications

Tested Applications:
WB, IHC, ELISA

Species Specificity:
Human, Mouse, Rat, Monkey

Note-IHC: suggested antigen retrieval with TE buffer pH 9.0; (*) Alternatively, antigen retrieval may be performed with citrate buffer pH 6.0

Positive Controls:

WB: HeLa cells, Neuro-2a cells, K-562 cells, MCF-7 cells, COS-7 cells, mouse testis tissue, rat testis tissue

IHC: human lung cancer tissue, human stomach cancer tissue

Background Information

METTL3 is a key S-adenosyl-L-methionine-binding subunit, which is a component of a complex multicomponent enzyme that catalyzes the methylation of internal adenosine residues in eukaryotic mRNA, forming N6-methyladenosine. It contains 2 putative nuclear localization signals and 2 consensus methylation motifs. The calculated molecular weight of METTL3 is 64 kDa, but modified METTL3 is about 65-70 kDa.

Storage

Storage:
Store at -20°C. Stable for one year after shipment.

Storage Buffer:
PBS with 0.02% sodium azide and 50% glycerol pH 7.3.

Aliquoting is unnecessary for -20°C storage

For technical support and original validation data for this product please contact:

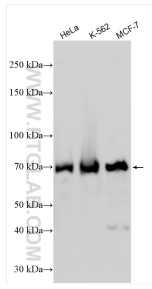
T: 4006900926

E: Proteintech-CN@ptglab.com

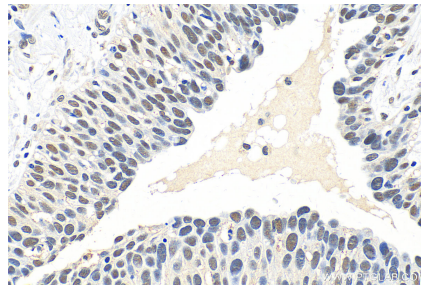
W: ptgcn.com

This product is exclusively available under Proteintech Group brand and is not available to purchase from any other manufacturer.

Selected Validation Data



Various lysates were subjected to SDS PAGE followed by western blot with 29314-1-AP (METTL3 antibody) at dilution of 1:1500 incubated at room temperature for 1.5 hours.



Immunohistochemical analysis of paraffin-embedded human lung cancer tissue slide using 29314-1-AP (METTL3 antibody) at dilution of 1:800 (under 40x lens). Heat mediated antigen retrieval with Tris-EDTA buffer (pH 9.0).