

For Research Use Only

C22orf32 Polyclonal antibody

Catalog Number: 29313-1-AP



Basic Information

Catalog Number:

29313-1-AP

Size:

750 ug/ml

Source:

Rabbit

Isotype:

IgG

Immunogen Catalog Number:

AG29162

GenBank Accession Number:

BC024237

GeneID (NCBI):

91689

UNIPROT ID:

Q9H4I9

Full Name:

chromosome 22 open reading frame

32

Observed MW:

10 kDa

Purification Method:

Antigen affinity purification

Recommended Dilutions:

WB 1:500-1:2000

IF/ICC 1:50-1:500

Applications

Tested Applications:

WB, IF/ICC, ELISA

Species Specificity:

human

Positive Controls:

WB : SW480 cells,

IF/ICC : A431 cells,

Background Information

C22orf32, also known as SMDT1 or EMRE, is a 10 kDa single-channel transmembrane that contains a mitochondrial targeting sequence, a transmembrane region, and a conserved aspart-rich C-terminal. It acts as a subunit of the MCU complex and increases mCa²⁺ uptake by activating the MCU function (PMID: 38417574).

Storage

Storage:

Store at -20°C. Stable for one year after shipment.

Storage Buffer:

PBS with 0.02% sodium azide and 50% glycerol pH 7.3.

Aliquoting is unnecessary for -20°C storage

For technical support and original validation data for this product please contact:

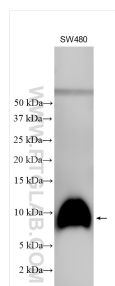
T: 4006900926

E: Proteintech-CN@ptglab.com

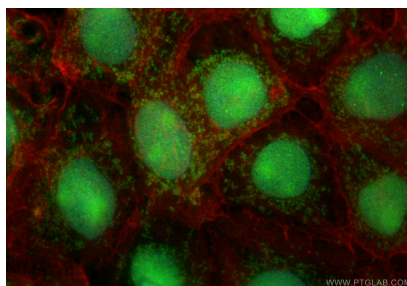
W: ptgcn.com

This product is exclusively available under Proteintech Group brand and is not available to purchase from any other manufacturer.

Selected Validation Data



Various lysates were subjected to SDS PAGE followed by western blot with 29313-1-AP (C22orf32 antibody) at dilution of 1:1000 incubated at room temperature for 1.5 hours.



Immunofluorescent analysis of (4% PFA) fixed A431 cells using C22orf32 antibody (29313-1-AP) at dilution of 1:200 and Multi-rAb CoraLite® Plus 488-Goat Anti-Rabbit Recombinant Secondary Antibody (H+L) (RGAR002), CL594-Phalloidin (red).