

For Research Use Only

Parvalbumin Polyclonal antibody

Catalog Number: 29312-1-AP

6 Publications



Basic Information

Catalog Number:

29312-1-AP

Concentration:

1000 ug/ml

Source:

Rabbit

Isotype:

IgG

Immunogen Catalog Number:

AG30189

GenBank Accession Number:

NM_002854

GeneID (NCBI):

5816

UNIPROT ID:

P20472

Full Name:

parvalbumin

Calculated MW:

12 kDa

Observed MW:

15 kDa

Purification Method:

Antigen affinity purification

Recommended Dilutions:

WB 1:500-1:2000

IHC 1:1000-1:4000

IF-P 1:50-1:500

Applications

Tested Applications:

WB, IHC, IF-P, ELISA

Cited Applications:

WB, IHC, IF

Species Specificity:

human, mouse, rat

Cited Species:

mouse, rat

Note-IHC: suggested antigen retrieval with TE buffer pH 9.0; (*) Alternatively, antigen retrieval may be performed with citrate buffer pH 6.0

Positive Controls:

WB : mouse brain tissue, rat brain tissue

IHC : mouse cerebellum tissue, mouse brain tissue, rat cerebellum tissue

IF-P : mouse cerebellum tissue, mouse brain tissue

Background Information

PVALB is a high affinity calcium ion-binding protein that is structurally and functionally similar to calmodulin and troponin C. PVALB is expressed in high levels only in fast-contracting muscles and at lower levels in brain and several endocrine tissues. It is thought to be involved in muscle relaxation.

Notable Publications

Author	Pubmed ID	Journal	Application
Yu-Zhu Gao	39546120	Mol Neurobiol	WB
Chengyu Zhou	38855607	Transl Androl Urol	IHC
Wei-Jun Zhang	37822967	Front Mol Neurosci	WB,IHC,IF

Storage

Storage:

Store at -20°C. Stable for one year after shipment.

Storage Buffer:

PBS with 0.02% sodium azide and 50% glycerol, pH7.3

Aliquoting is unnecessary for -20°C storage

For technical support and original validation data for this product please contact:

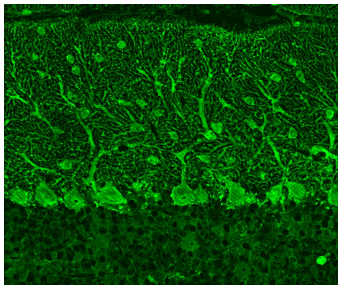
T: 4006900926

E: Proteintech-CN@ptglab.com

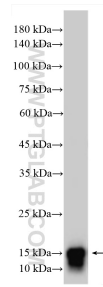
W: ptgcn.com

This product is exclusively available under Proteintech Group brand and is not available to purchase from any other manufacturer.

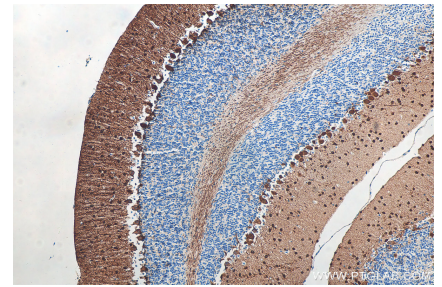
Selected Validation Data



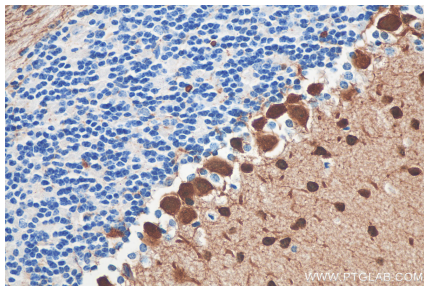
Immunofluorescent analysis of (4% PFA) fixed adult mouse cerebellum tissue using Parvalbumin antibody (29312-1-AP) at dilution of 1:1500 and Alexa Fluor 594 AffiniPure Donkey Anti-Rabbit IgG (H+L). (Image produced by Watt Lab at McGill University)



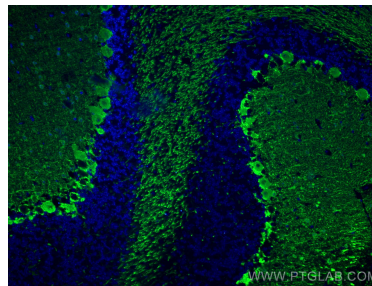
mouse brain tissue were subjected to SDS PAGE followed by western blot with 29312-1-AP (Parvalbumin antibody) at dilution of 1:1000 incubated at room temperature for 1.5 hours.



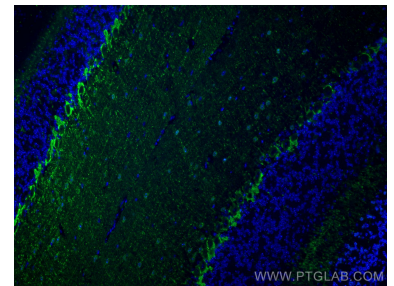
Immunohistochemical analysis of paraffin-embedded mouse cerebellum tissue slide using 29312-1-AP (Parvalbumin antibody) at dilution of 1:2000 (under 10x lens). Heat mediated antigen retrieval with Tris-EDTA buffer (pH 9.0).



Immunohistochemical analysis of paraffin-embedded mouse cerebellum tissue slide using 29312-1-AP (Parvalbumin antibody) at dilution of 1:2000 (under 40x lens). Heat mediated antigen retrieval with Tris-EDTA buffer (pH 9.0).



Immunofluorescent analysis of (4% PFA) fixed mouse cerebellum tissue using Parvalbumin antibody (29312-1-AP) at dilution of 1:200 and CoraLite®488-Conjugated AffiniPure Goat Anti-Rabbit IgG(H+L).



Immunofluorescent analysis of (4% PFA) fixed mouse cerebellum tissue using Parvalbumin antibody (29312-1-AP) at dilution of 1:200 and CoraLite®488-Conjugated AffiniPure Goat Anti-Rabbit IgG(H+L).