

For Research Use Only

Cyclin G Polyclonal antibody

Catalog Number: 29306-1-AP

1 Publications



Basic Information

Catalog Number:

29306-1-AP

Concentration:

350 µg/ml

Source:

Rabbit

Isotype:

IgG

Immunogen Catalog Number:

AG30937

GenBank Accession Number:

BC007093

GeneID (NCBI):

900

UNIPROT ID:

P51959

Full Name:

cyclin G1

Calculated MW:

34 kDa

Observed MW:

34 kDa

Purification Method:

Antigen affinity purification

Recommended Dilutions:

WB 1:500-1:1000

Applications

Tested Applications:

WB, ELISA

Cited Applications:

WB, IF

Species Specificity:

Human

Cited Species:

mouse

Positive Controls:

WB : MDA-MB-231 cells, MDA-MB-453s cells, T-47D cells

Background Information

Cyclin G is also named as CCNG, CYCG1 and CCNG1, and belongs to the cyclin family. Cyclin G may play a role in growth regulation. Cyclin G is associated with G2/M phase arrest in response to DNA damage. And it may be an intermediate by which p53 mediates its role as an inhibitor of cellular proliferation, and levels of Cyclin G are increased after induction of p53 by DNA damage (PMID:12015958). Cyclin G is high levels in skeletal muscle, ovary, kidney and colon. Cyclin G is very low levels in normal cells during G1 phase, which increase as cells enter the S phase and stay high throughout the S and G2/M phases. In breast cancer cells, consistent high levels of Cyclin G are found throughout the cell cycle (PMID:11063931).

Notable Publications

Author	Pubmed ID	Journal	Application
Panpan Xu	39858495	Biomolecules	WB,IF

Storage

Storage:

Store at -20°C. Stable for one year after shipment.

Storage Buffer:

PBS with 0.02% sodium azide and 50% glycerol pH 7.3.

Aliquoting is unnecessary for -20°C storage

For technical support and original validation data for this product please contact:

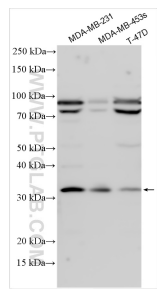
T: 4006900926

E: Proteintech-CN@ptglab.com

W: ptgcn.com

This product is exclusively available under Proteintech Group brand and is not available to purchase from any other manufacturer.

Selected Validation Data



Various lysates were subjected to SDS PAGE followed by western blot with 29306-1-AP (Cyclin G antibody) at dilution of 1:800 incubated at room temperature for 1.5 hours.