

For Research Use Only

# Nestin Polyclonal antibody, PBS Only

Catalog Number: 29285-1-PBS



## Basic Information

Catalog Number:

29285-1-PBS

Concentration:

1 mg/ml

Source:

Rabbit

Isotype:

IgG

Immunogen Catalog Number:

AG29865

GenBank Accession Number:

NM\_006617

GeneID (NCBI):

10763

UNIPROT ID:

P48681

Full Name:

nestin

Calculated MW:

177 kDa

Observed MW:

240-280 kDa

Purification Method:

Antigen affinity purification

## Applications

Tested Applications:

WB, IF/ICC, IF-P, FC (Intra), Indirect ELISA

Species Specificity:

human, mouse, rat

## Background Information

Nestin, also named as NES and Nbla00170, is a class VI intermediate filament protein expressed in stem cells of the central nervous system (CNS) but not in mature CNS cells. Its expression is used extensively as a marker for neural lineage cells derived from human embryonic stem (hES) and induced pluripotent stem (iPS) cells. Nestin is also expressed in non-neural stem cell populations such as pancreatic islet progenitors and hematopoietic progenitors. Nestin can be detected as 220-240 kDa and 240-280 kDa. Studies point toward nestin heavy posttranslational modifications as possibly serving particular functions in podocytes and in a few other particular cell types (PMID: 17210924).

## Storage

Storage:

Store at -80°C.

The product is shipped with ice packs. Upon receipt, store it immediately at -80°C

Storage Buffer:

PBS Only

For technical support and original validation data for this product please contact:

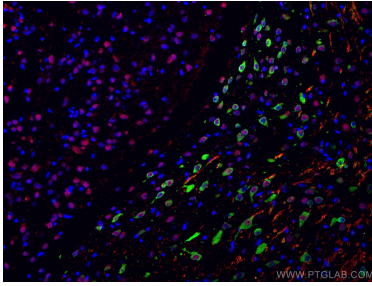
T: 4006900926

E: [Proteintech-CN@ptglab.com](mailto:Proteintech-CN@ptglab.com)

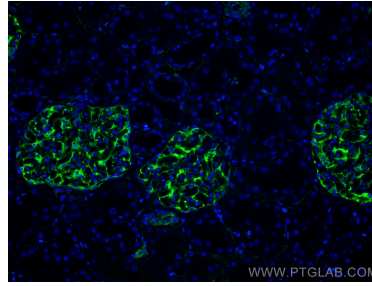
W: [ptgcn.com](http://ptgcn.com)

This product is exclusively available under Proteintech Group brand and is not available to purchase from any other manufacturer.

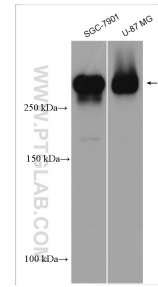
## Selected Validation Data



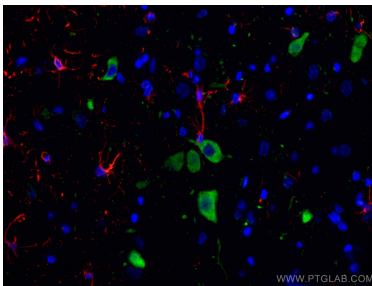
Immunofluorescent analysis of (4% PFA) fixed rat brain tissue using nestin antibody (29285-1-AP) at dilution of 1:200 and Coralite® 488-Conjugated AffiniPure Goat Anti-Rabbit IgG(H+L), NeuN antibody (66836-1-Ig, Clone: 3A4C1, red). This data was developed using the same antibody clone with 29285-1-PBS in a different storage buffer formulation.



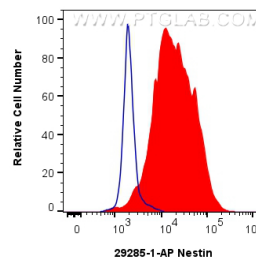
Immunofluorescent analysis of (4% PFA) fixed human kidney tissue using Nestin antibody (29285-1-AP) at dilution of 1:200 and Coralite® 488-Conjugated AffiniPure Goat Anti-Rabbit IgG(H+L). This data was developed using the same antibody clone with 29285-1-PBS in a different storage buffer formulation.



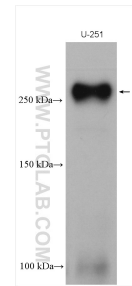
Various lysates were subjected to SDS PAGE followed by western blot with 29285-1-AP (nestin antibody) at dilution of 1:500 incubated at room temperature for 1.5 hours. This data was developed using the same antibody clone with 29285-1-PBS in a different storage buffer formulation.



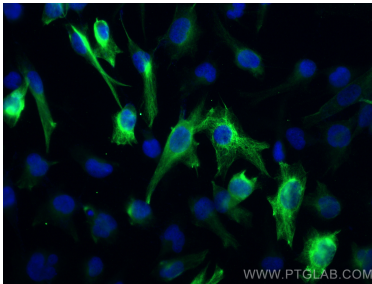
Immunofluorescent analysis of (4% PFA) fixed rat brain tissue using nestin antibody (29285-1-AP) at dilution of 1:200 and Coralite® 488-Conjugated AffiniPure Goat Anti-Rabbit IgG(H+L), GFAP antibody (60190-1-Ig, Clone: 4B2E10, red). This data was developed using the same antibody clone with 29285-1-PBS in a different storage buffer formulation.



1x10<sup>6</sup> SH-SY5Y cells were intracellularly stained with 0.4 ug Anti-Human Nestin (29285-1-AP) and Coralite® 488-Conjugated AffiniPure Goat Anti-Rabbit IgG(H+L) at dilution 1:1000 (red), or 0.4 ug Isotype Control. Cells were fixed with 4% PFA and permeabilized with Flow Cytometry Perm Buffer (PF00011-C). This data was developed using the same antibody clone with 29285-1-PBS in a different storage buffer formulation.



U-251 cells were subjected to SDS PAGE followed by western blot with 29285-1-AP (nestin antibody) at dilution of 1:600 incubated at room temperature for 1.5 hours. This data was developed using the same antibody clone with 29285-1-PBS in a different storage buffer formulation.



Immunofluorescent analysis of (-20°C Ethanol) fixed U-251 cells using Nestin antibody (29285-1-AP) at dilution of 1:400 and Coralite® 488-Conjugated AffiniPure Goat Anti-Rabbit IgG(H+L). This data was developed using the same antibody clone with 29285-1-PBS in a different storage buffer formulation.