

IFI16 Polyclonal antibody

Catalog Number: 29280-1-AP

Basic Information

Catalog Number: 29280-1-AP	GenBank Accession Number: BC017059	Purification Method: Antigen affinity purification
Size: 650 µg/ml	GeneID (NCBI): 3428	Recommended Dilutions: WB 1:5000-1:50000
Source: Rabbit	UNIPROT ID: Q16666	IHC 1:50-1:500
Isotype: IgG	Full Name: interferon, gamma-inducible protein 16	IF/ICC 1:200-1:800
Immunogen Catalog Number: AG30297	Calculated MW: 729 aa, 82 kDa	
	Observed MW: 85-95 kDa	

Applications

Tested Applications: IHC, WB, ELISA	Positive Controls:
Species Specificity: Human	WB : Daudi cells, Jurkat cells, MOLT-4 cells, Ramos cells
Note-IHC: suggested antigen retrieval with TE buffer pH 9.0; (*) Alternatively, antigen retrieval may be performed with citrate buffer pH 6.0	IHC : human renal cell carcinoma tissue,
	IF/ICC : HeLa cells,

Background Information

IFI16 is a member of a family of interferon-inducible nuclear proteins involved in transcriptional regulation functions as a transcriptional repressor. IFI16 may be involved in TP53-mediated transcriptional activation by enhancing TP53 sequence-specific DNA binding and modulating TP53 phosphorylation status. It has been reported that IFI16 participates in the regulation of autophagy, TP53-mediated cell death and innate immune response. IFI16 has different isoforms and 67790-1-Ig antibody detects proteins around 85-95 kDa in SDS-PAGE similar to papers. (PMID: 9718316, 14990579, 11146555, 22046441)

Storage

Storage:
Store at -20°C. Stable for one year after shipment.
Storage Buffer:
PBS with 0.02% sodium azide and 50% glycerol pH 7.3.
Aliquoting is unnecessary for -20°C storage

For technical support and original validation data for this product please contact:

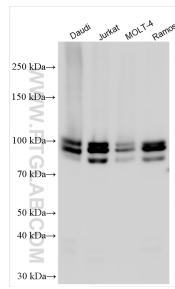
T: 4006900926

E: Proteintech-CN@ptglab.com

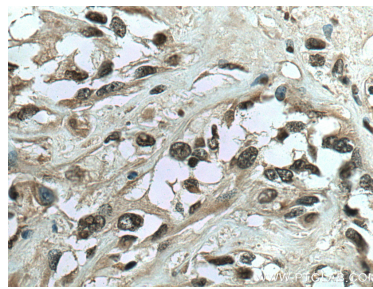
W: ptgcn.com

This product is exclusively available under Proteintech Group brand and is not available to purchase from any other manufacturer.

Selected Validation Data



Various lysates were subjected to SDS PAGE followed by western blot with 29280-1-AP (IF116 antibody) at dilution of 1:10000 incubated at room temperature for 1.5 hours.



Immunohistochemical analysis of paraffin-embedded human renal cell carcinoma tissue slide using 29280-1-AP (IF116 antibody) at dilution of 1:200 (under 40x lens). Heat mediated antigen retrieval with Tris-EDTA buffer (pH 9.0).