

For Research Use Only

# KMT2A/MLL1 Polyclonal antibody, PBS Only

Catalog Number: 29278-1-PBS



## Basic Information

Catalog Number:

29278-1-PBS

Source:

Rabbit

Isotype:

IgG

Immunogen Catalog Number:

AG30468

GenBank Accession Number:

NM\_001197104

GeneID (NCBI):

4297

UNIPROT ID:

Q03164

Full Name:

myeloid/lymphoid or mixed-lineage leukemia (trithorax homolog, Drosophila)

Calculated MW:

432 kDa

Observed MW:

180 kDa

Purification Method:

Antigen affinity purification

## Applications

Tested Applications:

WB, Indirect ELISA

Species Specificity:

human

## Background Information

KMT2A, also known as mixed-lineage leukemia (MLL), is a gene that encodes a lysine methyltransferase responsible for the transcriptional activation through lysine 4 of histone 3 (H3K4) methylation. KMT2A is expressed mainly in the nucleus and is ubiquitously present in various tissues, particularly in ovary, lymph node, endometrium, thyroid, and brain tissue. It plays a significant role in embryonic development, hematopoiesis, and neurodevelopment. Mutations in KMT2A have been associated with several pathological conditions.

## Storage

Storage:

Store at -80°C.

**The product is shipped with ice packs. Upon receipt, store it immediately at -80°C**

Storage Buffer:

PBS only, pH7.3

For technical support and original validation data for this product please contact:

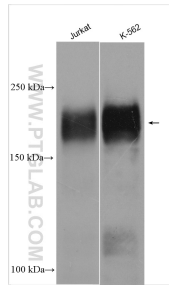
T: 4006900926

E: [Proteintech-CN@ptglab.com](mailto:Proteintech-CN@ptglab.com)

W: [ptgcn.com](http://ptgcn.com)

**This product is exclusively available under Proteintech Group brand and is not available to purchase from any other manufacturer.**

## Selected Validation Data



Various lysates were subjected to SDS PAGE followed by western blot with 29278-1-AP (MLL antibody) at dilution of 1:2000 incubated at room temperature for 1.5 hours. This data was developed using the same antibody clone with 29278-1-PBS in a different storage buffer formulation.