

For Research Use Only

KMT2A Polyclonal antibody

Catalog Number: 29278-1-AP

3 Publications



Basic Information

Catalog Number:

29278-1-AP

Size:

900 ug/ml

Source:

Rabbit

Isotype:

IgG

Immunogen Catalog Number:

AG30468

GenBank Accession Number:

NM_001197104

GeneID (NCBI):

4297

UNIPROT ID:

Q03164

Full Name:

myeloid/lymphoid or mixed-lineage leukemia (trithorax homolog, Drosophila)

Calculated MW:

432 kDa

Observed MW:

180 kDa

Purification Method:

Antigen affinity purification

Recommended Dilutions:

WB 1:1000-1:4000

Applications

Tested Applications:

WB, ELISA

Cited Applications:

WB, IF, ChIP

Species Specificity:

human

Cited Species:

human

Positive Controls:

WB: Jurkat cells, K-562 cells

Background Information

KMT2A, also known as mixed-lineage leukemia (MLL), is a gene that encodes a lysine methyltransferase responsible for the transcriptional activation through lysine 4 of histone 3 (H3K4) methylation. KMT2A is expressed mainly in the nucleus and is ubiquitously present in various tissues, particularly in ovary, lymph node, endometrium, thyroid, and brain tissue. It plays a significant role in embryonic development, hematopoiesis, and neurodevelopment. Mutations in KMT2A have been associated with several pathological conditions.

Notable Publications

Author	Pubmed ID	Journal	Application
Pawet Piatek	38745328	J Inflamm (Lond)	IF
Yali Qin	38750719	Cancer Lett	WB
Mai Abdel Mouti	37709746	Nat Commun	WB, ChIP

Storage

Storage:

Store at -20°C. Stable for one year after shipment.

Storage Buffer:

PBS with 0.02% sodium azide and 50% glycerol pH 7.3.

Aliquoting is unnecessary for -20°C storage

For technical support and original validation data for this product please contact:

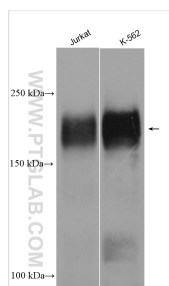
T: 4006900926

E: Proteintech-CN@ptglab.com

W: ptgcn.com

This product is exclusively available under Proteintech Group brand and is not available to purchase from any other manufacturer.

Selected Validation Data



Various lysates were subjected to SDS PAGE followed by western blot with 29278-1-AP (MLL antibody) at dilution of 1:2000 incubated at room temperature for 1.5 hours.