

For Research Use Only

CBLL1 Polyclonal antibody

Catalog Number: 29219-1-AP



Basic Information

Catalog Number: 29219-1-AP	GenBank Accession Number: BC027460	Purification Method: Antigen affinity purification
Concentration: 800 ug/ml	GeneID (NCBI): 79872	Recommended Dilutions: WB 1:2000-1:10000 IHC 1:50-1:500
Source: Rabbit	UNIPROT ID: Q75N03	
Isotype: IgG	Full Name: Cas-BR-M (murine) ecotropic retroviral transforming sequence-like 1	
Immunogen Catalog Number: AG30900	Calculated MW: 491 aa, 55 kDa	
	Observed MW: 60-70 kDa	

Applications

Tested Applications: WB, IHC, ELISA	Positive Controls:
Species Specificity: human	WB : A549 cells, HeLa cells, NCI-H1299 cells
Note-IHC: suggested antigen retrieval with TE buffer pH 9.0; (*) Alternatively, antigen retrieval may be performed with citrate buffer pH 6.0	IHC : human lung cancer tissue,

Background Information

Cbl proto - oncogene E3 ubiquitin protein ligase - like 1, RNF188, Hakai (CBLL1) is an evolutionarily conserved E3 ubiquitin ligase containing a RING - finger domain. CBLL1 contains a typical RING - finger, short pTyr - binding domain, and proline - rich domain. CBLL1 expression is upregulated in human colon and gastric cancer tissues, and CBLL1 has been reported to induce anchorage - dependent cell growth. CBLL1 immunostaining was observed in both the nuclei and cytoplasm of cancer cells. (PMID: 31124298, PMID: 31646569, PMID: 21191016)

Storage

Storage:
Store at -20°C. Stable for one year after shipment.
Storage Buffer:
PBS with 0.02% sodium azide and 50% glycerol pH 7.3.
Aliquoting is unnecessary for -20°C storage

For technical support and original validation data for this product please contact:

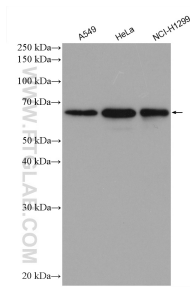
T: 4006900926

E: Proteintech-CN@ptglab.com

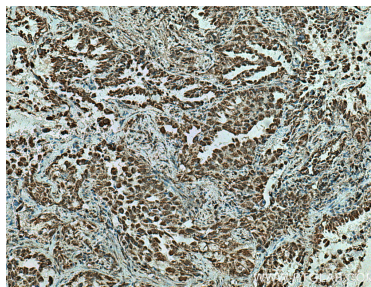
W: ptgcn.com

This product is exclusively available under Proteintech Group brand and is not available to purchase from any other manufacturer.

Selected Validation Data



Various lysates were subjected to SDS PAGE followed by western blot with 29219-1-AP (CBLL1 antibody) at dilution of 1:5000 incubated at room temperature for 1.5 hours.



Immunohistochemical analysis of paraffin-embedded human lung cancer tissue slide using 29219-1-AP (CBLL1 antibody) at dilution of 1:200 (under 10x lens). Heat mediated antigen retrieval with Tris-EDTA buffer (pH 9.0).