

For Research Use Only

PKC Gamma Polyclonal antibody

Catalog Number: 29208-1-AP **1 Publications**



Basic Information

Catalog Number: 29208-1-AP	GenBank Accession Number: BC047876	Purification Method: Antigen affinity purification
Size: 1000 µg/ml	GeneID (NCBI): 5582	Recommended Dilutions: WB 1:1000-1:4000 IHC 1:50-1:500
Source: Rabbit	UNIPROT ID: P05129	
Isotype: IgG	Full Name: protein kinase C, gamma	
Immunogen Catalog Number: AG25085	Calculated MW: 78 kDa	
	Observed MW: 78 kDa	

Applications

Tested Applications: IHC, WB, ELISA	Positive Controls: WB : mouse brain tissue, rat brain tissue IHC : mouse cerebellum tissue,
Cited Applications: WB	
Species Specificity: Human, mouse, rat	
Cited Species: mouse	
Note-IHC: suggested antigen retrieval with TE buffer pH 9.0; (*) Alternatively, antigen retrieval may be performed with citrate buffer pH 6.0	

Background Information

Protein kinase C (PKC) is a family of serine- and threonine-specific protein kinases that can be activated by calcium and second messenger diacylglycerol. PKC family members phosphorylate a wide variety of protein targets and are known to be involved in diverse cellular signaling pathways. PKC gamma is a neuron-specific member of the classical PKCs and is activated and translocated to subcellular regions as a result of various stimuli, including diacylglycerol synthesis, increased intracellular Ca(2+) and phorbol esters. Defects in this protein have been associated with spinocerebellar ataxia type 14 (SCA14), an autosomal dominant neurodegenerative disease.

Notable Publications

Author	Pubmed ID	Journal	Application
Jing Dai	36627245	Cereb Cortex	WB

Storage

Storage:
Store at -20°C.
Storage Buffer:
PBS with 0.02% sodium azide and 50% glycerol pH 7.3.
Aliquoting is unnecessary for -20°C storage

For technical support and original validation data for this product please contact:

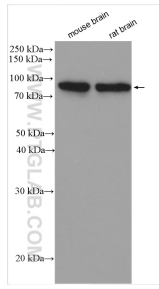
T: 4006900926

E: Proteintech-CN@ptglab.com

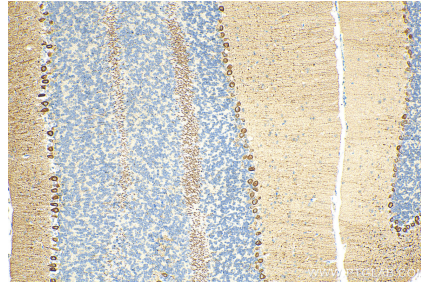
W: ptgcn.com

This product is exclusively available under Proteintech Group brand and is not available to purchase from any other manufacturer.

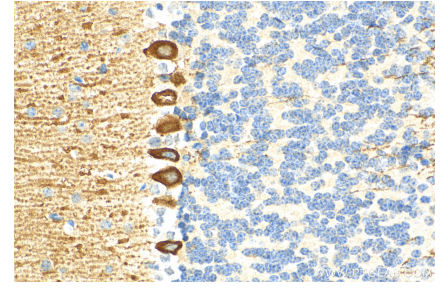
Selected Validation Data



Various lysates were subjected to SDS PAGE followed by western blot with 29208-1-AP (PKC Gamma antibody) at dilution of 1:2000 incubated at room temperature for 1.5 hours.



Immunohistochemical analysis of paraffin-embedded mouse cerebellum tissue slide using 29208-1-AP (PKC Gamma antibody) at dilution of 1:200 (under 10x lens). Heat mediated antigen retrieval with Tris-EDTA buffer (pH 9.0).



Immunohistochemical analysis of paraffin-embedded mouse cerebellum tissue slide using 29208-1-AP (PKC Gamma antibody) at dilution of 1:200 (under 40x lens). Heat mediated antigen retrieval with Tris-EDTA buffer (pH 9.0).