

For Research Use Only

# SULT2B1 Polyclonal antibody

Catalog Number: 29185-1-AP



## Basic Information

Catalog Number:

29185-1-AP

Size:

1200 µg/ml

Source:

Rabbit

Isotype:

IgG

Immunogen Catalog Number:

AG30209

GenBank Accession Number:

BC034694

GeneID (NCBI):

6820

UNIPROT ID:

O00204

Full Name:

sulfotransferase family, cytosolic, 2B, member 1

Calculated MW:

365 aa, 41 kDa

Observed MW:

41 kDa

Purification Method:

Antigen affinity purification

Recommended Dilutions:

WB 1:1000-1:4000

## Applications

Tested Applications:

WB, ELISA

Species Specificity:

Human, Mouse

Positive Controls:

WB: A549 cells, mouse skin tissue, LNCaP cells, MCF-7 cells

## Background Information

SULT2B1 is a member of hydroxysteroid sulfotransferase (SULT) family that catalyzes sulfonation of hormones and other molecules. SULT2B1 encodes two isoforms, SULT2B1a and SULT2B1b, that differ only at their amino termini but have distinct biochemical properties as well as tissue distribution. The human fetal brain appears to only express the SULT2B1a isoform, while SULT2B1b is the predominant hydroxysteroid sulfotransferase expressed in human skin. Northern blot analysis revealed SULT2B1a has a limited tissue distribution in liver, adrenal and stomach, whereas SULT2B1b can be detected in a variety of hormone-responsive tissues including placenta, ovary, uterus, and prostate.

## Storage

Storage:

Store at -20°C.

Storage Buffer:

PBS with 0.02% sodium azide and 50% glycerol pH 7.3.

Aliquoting is unnecessary for -20°C storage

For technical support and original validation data for this product please contact:

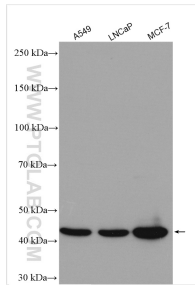
T: 4006900926

E: [Proteintech-CN@ptglab.com](mailto:Proteintech-CN@ptglab.com)

W: [ptgcn.com](http://ptgcn.com)

This product is exclusively available under Proteintech Group brand and is not available to purchase from any other manufacturer.

## Selected Validation Data



Various lysates were subjected to SDS PAGE followed by western blot with 29185-1-AP (SULT2B1 antibody) at dilution of 1:2000 incubated at room temperature for 1.5 hours.