

# TAK1 Polyclonal antibody

Catalog Number: 29167-1-AP

## Basic Information

<b>Catalog Number:</b> 29167-1-AP	<b>GenBank Accession Number:</b> BC017715	<b>Purification Method:</b> Antigen affinity purification
<b>Size:</b> 1000 µg/ml	<b>GeneID (NCBI):</b> 6885	<b>Recommended Dilutions:</b> WB 1:500-1:2000 IHC 1:50-1:500
<b>Source:</b> Rabbit	<b>UNIPROT ID:</b> O43318	
<b>Isotype:</b> IgG	<b>Full Name:</b> mitogen-activated protein kinase kinase kinase 7	
<b>Immunogen Catalog Number:</b> AG30725	<b>Calculated MW:</b> 579 aa, 64 kDa <b>Observed MW:</b> 64-70 kDa	

## Applications

<b>Tested Applications:</b> IHC, WB, ELISA	<b>Positive Controls:</b> WB : HEK-293 cells, HeLa cells, K-562 cells IHC : human prostate cancer tissue,
<b>Species Specificity:</b> Human	
<b>Note-IHC: suggested antigen retrieval with TE buffer pH 9.0; (*) Alternatively, antigen retrieval may be performed with citrate buffer pH 6.0</b>	

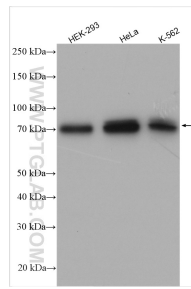
## Background Information

MAP3K7(Mitogen-activated protein kinase kinase kinase 7) is also named as TAK1 and belongs to the MAP kinase kinase kinase subfamily. It plays an important role in the cascades of cellular responses evoked by changes in the environment. It has been linked to interleukin-1 receptor and tumor necrosis factor receptor signaling (PMID: 16186825). It has 4 isoforms (53-55 kDa, 64-70 kDa and 75-80 kDa) produced by alternative splicing.

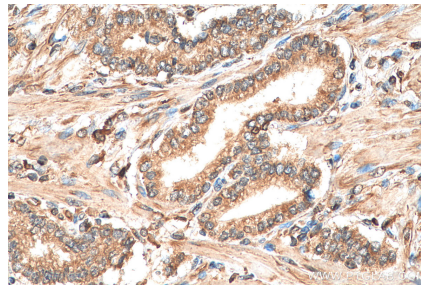
## Storage

**Storage:**  
Store at -20°C. Stable for one year after shipment.  
**Storage Buffer:**  
PBS with 0.02% sodium azide and 50% glycerol pH 7.3.  
**Aliquoting is unnecessary for -20°C storage**

## Selected Validation Data



Various lysates were subjected to SDS PAGE followed by western blot with 29167-1-AP (TAK1 antibody) at dilution of 1:1000 incubated at room temperature for 1.5 hours.



Immunohistochemical analysis of paraffin-embedded human prostate cancer tissue slide using 29167-1-AP (TAK1 antibody) at dilution of 1:200 (under 40x lens). Heat mediated antigen retrieval with Tris-EDTA buffer (pH 9.0).