

For Research Use Only

Phospho-PKC Alpha (Thr638) Polyclonal antibody



Catalog Number: 29123-1-AP

5 Publications

Basic Information

Catalog Number:

29123-1-AP

Size:

300 µg/ml

Source:

Rabbit

Isotype:

IgG

GenBank Accession Number:

AK055431

GeneID (NCBI):

5578

UNIPROT ID:

P17252

Full Name:

protein kinase C, alpha

Calculated MW:

77 kDa

Observed MW:

77 kDa

Purification Method:

Antigen affinity purification

Recommended Dilutions:

WB 1:2000-1:10000

IF/ICC 1:200-1:800

Applications

Tested Applications:

WB, IF/ICC, ELISA

Cited Applications:

WB

Species Specificity:

Human, mouse

Cited Species:

human, mouse

Positive Controls:

WB: λ phosphatase treated NIH/3T3 cells, PMA treated HL-60 cells

IF/ICC: λ phosphatase treated HeLa cells,

Background Information

PKCs are a family of serine/threonine kinases involved in various processes in cells including proliferation, differentiation, cell survival, and apoptosis. PKC family is composed of three different subgroups: conventional (cPKC), the novel (nPKC) and atypical (aPKC). PKC α, β 1, β 2, and γ belong to cPKC, PKC δ, ε, η and θ are nPKC, whereas aPKC comprises of PKC ζ and λ / ι. All PKCs consist of the N-terminal regulatory region and C-terminal catalytic region (kinase domain). PKCs are physiologically activated by various extracellular signals transduced by hormones, growth factors, cytokines or antigens. The presence of activated PKCs on internal membranes leads to the phosphorylation of various interacting proteins. (PMID: 32466765, PMID: 12417016)

Notable Publications

Author	Pubmed ID	Journal	Application
Jing Wang	38262412	Cell Rep Med	WB
Zhiye Zhao	37833954	Int J Mol Sci	WB
Yuwei Wu	37232941	J Leukoc Biol	WB

Storage

Storage:

Store at -20°C. Stable for one year after shipment.

Storage Buffer:

PBS with 0.02% sodium azide and 50% glycerol pH 7.3.

Aliquoting is unnecessary for -20°C storage

For technical support and original validation data for this product please contact:

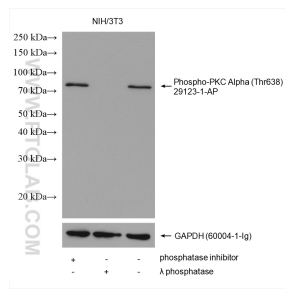
T: 4006900926

E: Proteintech-CN@ptglab.com

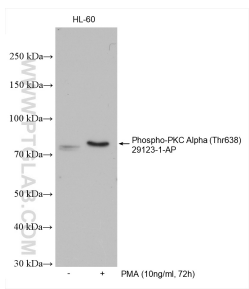
W: ptgcn.com

This product is exclusively available under Proteintech Group brand and is not available to purchase from any other manufacturer.

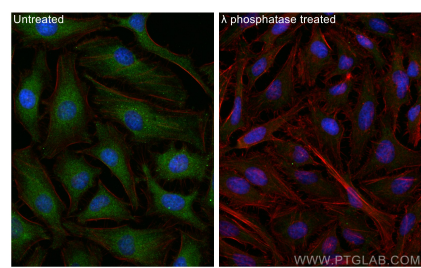
Selected Validation Data



Non-treated NIH/3T3, phosphatase inhibitor treated and λ phosphatase treated NIH/3T3 cells were subjected to SDS PAGE followed by western blot with 29123-1-AP (Phospho-PKC Alpha (Thr638) antibody) at dilution of 1:5000 incubated at room temperature for 1 hours. The membrane was stripped and re-blotted with GAPDH antibody as loading control.



Non-treated and PMA treated HL-60 cells were subjected to SDS PAGE followed by western blot with 29123-1-AP (Phospho-PKC Alpha (Thr638) antibody) at dilution of 1:5000 incubated at room temperature for 1.5 hours.



Immunofluorescent analysis of (-20°C Ethanol) fixed λ phosphatase treated HeLa cells using Phospho-PKC Alpha (Thr638) antibody (29123-1-AP) at dilution of 1:400 and CoraLite®488-Conjugated AffiniPure Goat Anti-Rabbit IgG(H+L) (SA00013-2), CL594-Phalloidin (red).