

RAB20 Polyclonal antibody

Catalog Number: 29110-1-AP

Basic Information

Catalog Number:	GenBank Accession Number:	Purification Method:
29110-1-AP	BC026025	Antigen affinity purification
Size:	GeneID (NCBI):	Recommended Dilutions:
1000 µg/ml	55647	WB 1:500-1:2000
Source:	UNIPROT ID:	IHC 1:50-1:500
Rabbit	Q9NX57	
Isotype:	Full Name:	
IgG	RAB20, member RAS oncogene family	
Immunogen Catalog Number:	Calculated MW:	
AG30459	26 kDa	
	Observed MW:	
	29 kDa	

Applications

Tested Applications:	Positive Controls:
IHC, WB, ELISA	WB : HeLa cells, K-562 cells
Species Specificity:	IHC : human liver cancer tissue,
Human	

Note-IHC: suggested antigen retrieval with TE buffer pH 9.0; (*) Alternatively, antigen retrieval may be performed with citrate buffer pH 6.0

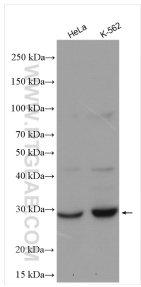
Background Information

RAB20 is a member of RAS oncogene family, it has no close relationship to any other members of RAB subfamily which consists of small GTP-binding proteins involved in the regulation of intracellular vesicular transport. Firstly found highly expressed on the apical side of kidney tubule epithelial cells, RAB20 was speculated to be involved in apical endocytosis and recycling processes. So far, its function is not well known, however, RAB20 is recently found higher expressed in pancreatic adenocarcinomas than normal pancreas, which is proved by WB and IHC analyses, suggesting its promising role in diagnosis of pancreatic carcinogenesis. Catalog#11616-1-AP is a rabbit polyclonal antibody raised against full-length of human RAB20.

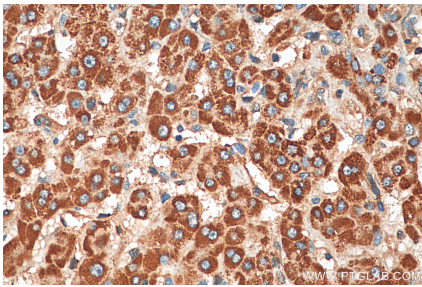
Storage

Storage:
Store at -20°C. Stable for one year after shipment.
Storage Buffer:
PBS with 0.02% sodium azide and 50% glycerol pH 7.3.
Aliquoting is unnecessary for -20°C storage

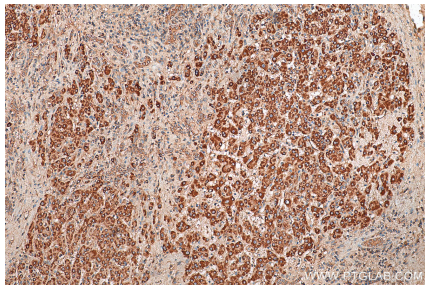
Selected Validation Data



Various lysates were subjected to SDS PAGE followed by western blot with 29110-1-AP (RAB20 antibody) at dilution of 1:1000 incubated at room temperature for 1.5 hours.



Immunohistochemical analysis of paraffin-embedded human liver cancer tissue slide using 29110-1-AP (RAB20 antibody) at dilution of 1:200 (under 40x lens). Heat mediated antigen retrieval with Tris-EDTA buffer (pH 9.0).



Immunohistochemical analysis of paraffin-embedded human liver cancer tissue slide using 29110-1-AP (RAB20 antibody) at dilution of 1:200 (under 10x lens). Heat mediated antigen retrieval with Tris-EDTA buffer (pH 9.0).