

CES1 Polyclonal antibody

Catalog Number: 29041-1-AP

Basic Information

Catalog Number:

29041-1-AP

Size:

600 µg/ml

Source:

Rabbit

Isotype:

IgG

Immunogen Catalog Number:

AG30534

GenBank Accession Number:

BC012418

GeneID (NCBI):

1066

UNIPROT ID:

P23141

Full Name:

carboxylesterase 1
(monocyte/macrophage serine
esterase 1)

Calculated MW:

566 aa, 62 kDa

Observed MW:

62 kDa

Purification Method:

Antigen affinity purification

Recommended Dilutions:

WB 1:1000-1:6000

IHC 1:50-1:500

IF/ICC 1:200-1:800

Applications

Tested Applications:

IF/ICC, IHC, WB, ELISA

Species Specificity:

Human, rat, mouse

**Note-IHC: suggested antigen retrieval with
TE buffer pH 9.0; (*) Alternatively, antigen
retrieval may be performed with citrate
buffer pH 6.0**

Positive Controls:

WB: THP-1 cells, rat liver tissue, hepG2 cells, Caco-2
cells

IHC: mouse liver tissue,

IF/ICC: C2C12 cells, HepG2 cells

Background Information

Human carboxylesterase 1 (hCE1 or CES1) is a serine esterase that hydrolyzes a variety of endogenous and exogenous substrates. CES1 contributes to approximately 90% of hepatic hydrolytic activity in human livers (PMID: 27895113). Variation in CES1 has the ability to affect the metabolism of methylphenidate (PMID: 28087982). CES1 has 567 amino acids and a theoretical molecular mass of 62 kDa.

Storage

Storage:

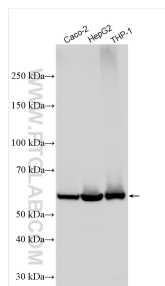
Store at -20°C. Stable for one year after shipment.

Storage Buffer:

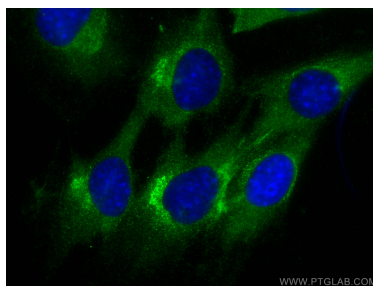
PBS with 0.02% sodium azide and 50% glycerol pH 7.3.

Aliquoting is unnecessary for -20°C storage

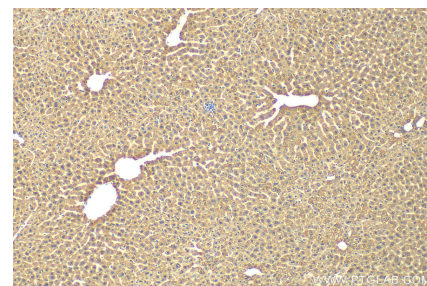
Selected Validation Data



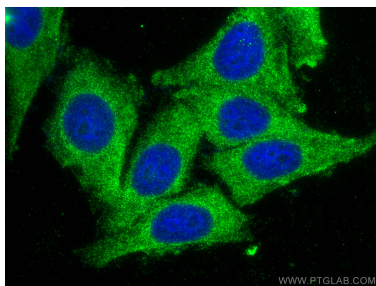
Various lysates were subjected to SDS PAGE followed by western blot with 29041-1-AP (CES1 antibody) at dilution of 1:3000 incubated at room temperature for 1.5 hours.



Immunofluorescent analysis of (-20°C Methanol) fixed C2C12 cells using CES1 antibody (29041-1-AP) at dilution of 1:400 and CoraLite®488-Conjugated AffiniPure Goat Anti-Rabbit IgG(H+L).



Immunohistochemical analysis of paraffin-embedded mouse liver tissue slide using 29041-1-AP (CES1 antibody) at dilution of 1:200 (under 10x lens). Heat mediated antigen retrieval with Tris-EDTA buffer (pH 9.0).



Immunofluorescent analysis of (-20°C Ethanol) fixed HepG2 cells using CES1 antibody (29041-1-AP) at dilution of 1:400 and CoraLite®488-Conjugated AffiniPure Goat Anti-Rabbit IgG(H+L).