

For Research Use Only

# Phospho-PLA2G4A (Ser505) Polyclonal antibody



Catalog Number: 28925-1-AP

## Basic Information

**Catalog Number:**

28925-1-AP

**Size:**

500 µg/ml

**Source:**

Rabbit

**Isotype:**

IgG

**GenBank Accession Number:**

BC114340

**GeneID (NCBI):**

5321

**UNIPROT ID:**

P47712

**Full Name:**

phospholipase A2, group IVA  
(cytosolic, calcium-dependent)

**Calculated MW:**

749 aa, 85 kDa

**Observed MW:**

100-110 kDa

**Purification Method:**

Antigen affinity purification

**Recommended Dilutions:**

WB 1:1000-1:6000

IF 1:200-1:800

## Applications

**Tested Applications:**

WB, IF/ICC, ELISA

**Species Specificity:**

Human

**Positive Controls:**

WB: λ phosphatase treated HeLa cells,

IF: λ phosphatase treated HeLa cells,

## Background Information

PLA2G4A, also named as cPLA2 (cytosolic phospholipase A2), is a highly conserved and widely expressed enzyme which can promote lipid mediator production. PLA2G4A plays a major role in membrane lipid remodeling and biosynthesis of lipid mediators of the inflammatory response. It has been reported that the activity and expression levels of PLA2G4A are upregulated in several neurodegenerative diseases. PLA2G4A can be activated at the phosphorylation site of ser505 by MAP kinase. (PMID: 25838312, 8381049, 31238788)

## Storage

**Storage:**

Store at -20°C. Stable for one year after shipment.

**Storage Buffer:**

PBS with 0.02% sodium azide, 50% glycerol pH 7.3 and 0.05%BSA.

Aliquoting is unnecessary for -20°C storage

For technical support and original validation data for this product please contact:

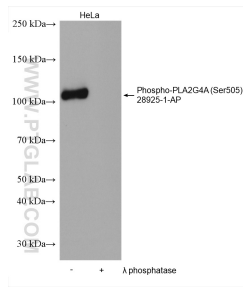
T: 4006900926

E: Proteintech-CN@ptglab.com

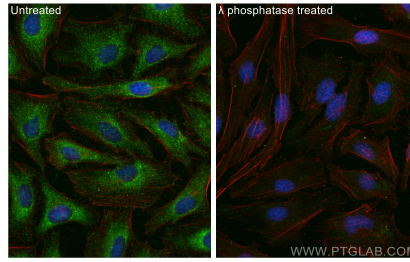
W: ptgcn.com

This product is exclusively available under Proteintech Group brand and is not available to purchase from any other manufacturer.

## Selected Validation Data



Non-treated HeLa and  $\lambda$  phosphatase treated HeLa cells were subjected to SDS PAGE followed by western blot with 28925-1-AP (Phospho-PLA2G4A (Ser505) antibody) at dilution of 1:3000 incubated at 4°C overnight.



Immunofluorescent analysis of (-20°C Ethanol) fixed  $\lambda$  phosphatase treated HeLa cells using Phospho-PLA2G4A (Ser505) antibody (28925-1-AP) at dilution of 1:400 and CoraLite® 488-Conjugated AffiniPure Goat Anti-Rabbit IgG(H+L) (SA00013-2), CL594-Phalloidin (red).