

For Research Use Only

# GRB10 Polyclonal antibody

Catalog Number: 28872-1-AP



## Basic Information

<b>Catalog Number:</b> 28872-1-AP	<b>GenBank Accession Number:</b> BC024285	<b>Purification Method:</b> Antigen affinity purification
<b>Size:</b> 300 µg/ml	<b>GeneID (NCBI):</b> 2887	<b>Recommended Dilutions:</b> WB 1:500-1:1000 IHC 1:250-1:1000
<b>Source:</b> Rabbit	<b>UNIPROT ID:</b> Q13322	
<b>Isotype:</b> IgG	<b>Full Name:</b> growth factor receptor-bound protein 10	
	<b>Calculated MW:</b> 536aa,61 kDa; 594aa,67 kDa	
	<b>Observed MW:</b> 60-70 kDa	

## Applications

### Tested Applications:

IHC, WB, ELISA

### Species Specificity:

Human, Mouse

**Note-IHC: suggested antigen retrieval with TE buffer pH 9.0; (\*) Alternatively, antigen retrieval may be performed with citrate buffer pH 6.0**

### Positive Controls:

WB : BxPC-3 cells, HepG2 cells, mouse brain tissue, mouse pancreas tissue

IHC : human liver tissue,

## Background Information

GRB10 is an adapter protein that modulates the coupling of a number of cell surface receptor kinases with specific signaling pathways. GRB10 has three consensus domains including pleckstrin homology (PH) domain, SH2/SH3 domain, and Ras-associating domain. By binding to kinases, GRB10 suppresses signals from activated receptors tyrosine kinases, including INSR and IGF1R. It may play a role in mediating ubiquitination of INSR, leading to proteasomal degradation. GRB10 has 4 isoforms with the molecular mass of 60-70 kDa, which are produced by alternative splicing.

## Storage

### Storage:

Store at -20°C. Stable for one year after shipment.

### Storage Buffer:

PBS with 0.02% sodium azide and 50% glycerol pH 7.3.

Aliquoting is unnecessary for -20°C storage

For technical support and original validation data for this product please contact:

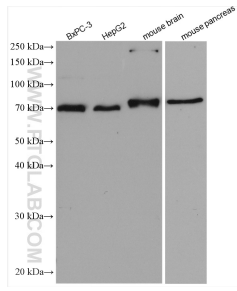
T: 4006900926

E: [Proteintech-CN@ptglab.com](mailto:Proteintech-CN@ptglab.com)

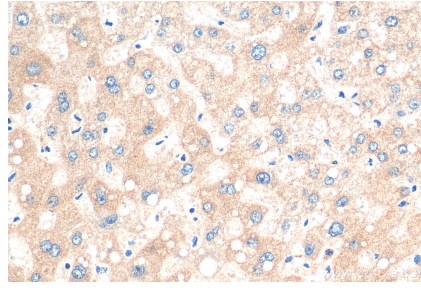
W: [ptgcn.com](http://ptgcn.com)

**This product is exclusively available under Proteintech Group brand and is not available to purchase from any other manufacturer.**

## Selected Validation Data



Various lysates were subjected to SDS PAGE followed by western blot with 28872-1-AP (GRB10 antibody) at dilution of 1:500 incubated at room temperature for 1.5 hours.



Immunohistochemical analysis of paraffin-embedded human liver tissue slide using 28872-1-AP (GRB10 antibody) at dilution of 1:500 (under 40x lens). Heat mediated antigen retrieval with Tris-EDTA buffer (pH 9.0).