

For Research Use Only

Phospho-Beta Catenin (Ser675) Polyclonal antibody



Catalog Number: 28853-1-AP **7 Publications**

Basic Information

Catalog Number:

28853-1-AP

Size:

450 µg/ml

Source:

Rabbit

Isotype:

IgG

GenBank Accession Number:

BC058926

GeneID (NCBI):

1499

ENSEMBL Gene ID:

ENSG00000168036

UNIPROT ID:

P35222

Full Name:

catenin (cadherin-associated protein),
beta 1, 88kDa

Calculated MW:

781 aa, 86 kDa

Observed MW:

90-100 kDa

Purification Method:

Protein A purification

Recommended Dilutions:

WB 1:500-1:3000

IF 1:200-1:800

Applications

Tested Applications:

IF/ICC, WB, ELISA

Cited Applications:

WB

Species Specificity:

Human

Cited Species:

human, mouse, bovine

Positive Controls:

WB: λ phosphatase treated HT-29 cells,

IF: λ phosphatase treated MCF-7 cells,

Background Information

Beta Catenin, also known as CTNNB1, is an evolutionarily conserved, multifunctional intracellular protein. Beta catenin is a core component of the cadherin protein complex, whose stabilization is essential for the activation of Wnt/β-catenin signaling. Phosphorylation of Ser675 in the C-terminus of at beta catenin promotes nuclear accumulation and transcriptional activity, resulting in increased activation of the Wnt/β-catenin signaling pathway (PMID: 25980439). In addition, Ser675 phosphorylation promotes beta catenin interaction with the transcriptional coactivator CREB-binding protein in the nucleus (PMID: 16476742).

Notable Publications

Author	Pubmed ID	Journal	Application
Pu Huang	35813315	Ann Transl Med	WB
Shu Fang	38474345	Cells	WB
Yuanxi Leng	37832904	Bone	WB

Storage

Storage:

Store at -20°C. Stable for one year after shipment.

Storage Buffer:

PBS with 0.02% sodium azide and 50% glycerol pH 7.3.

Aliquoting is unnecessary for -20°C storage

For technical support and original validation data for this product please contact:

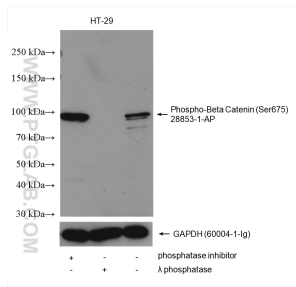
T: 4006900926

E: Proteintech-CN@ptglab.com

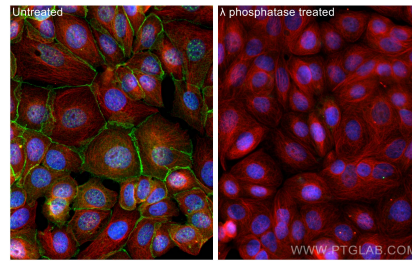
W: ptgcn.com

This product is exclusively available under Proteintech Group brand and is not available to purchase from any other manufacturer.

Selected Validation Data



Non-treated HT-29 cells, phosphatase inhibitor and λ phosphatase treated HT-29 cells were subjected to SDS PAGE followed by western blot with 28853-1-AP (Phospho-Beta Catenin (Ser675) antibody) at dilution of 1:1500 incubated at room temperature for 1.5 hours. The membrane was stripped and re-blotted with GAPDH antibody as loading control.



Immunofluorescent analysis of (4% PFA) fixed λ phosphatase treated MCF-7 cells using Phospho-Beta Catenin (Ser675) antibody (28853-1-AP) at dilution of 1:400 and CoraLite@488-Conjugated AffiniPure Goat Anti-Rabbit IgG(H+L), Alpha Tubulin antibody (66031-1-Ig, Clone: 1E4C11, red).