

For Research Use Only

# LTBP2 Polyclonal antibody

Catalog Number: 28824-1-AP

1 Publications



## Basic Information

Catalog Number:

28824-1-AP

Concentration:

500 ug/ml

Source:

Rabbit

Isotype:

IgG

Immunogen Catalog Number:

AG29737

GenBank Accession Number:

BC078659

GeneID (NCBI):

4053

UNIPROT ID:

Q14767

Full Name:

latent transforming growth factor beta

binding protein 2

Calculated MW:

1821 aa, 195 kDa

Observed MW:

260 kDa

Purification Method:

Antigen affinity purification

Recommended Dilutions:

IP: 0.5-4.0 ug for 1.0-3.0 mg of total protein lysate

IHC: 1:50-1:500

IF/ICC: 1:200-1:800

## Applications

Tested Applications:

IHC, IF/ICC, IP, ELISA

Cited Applications:

IHC

Species Specificity:

human, mouse

Cited Species:

human

**Note-IHC: suggested antigen retrieval with TE buffer pH 9.0; (\*) Alternatively, antigen retrieval may be performed with citrate buffer pH 6.0**

Positive Controls:

IP: U2OS cells,

IHC: mouse lung tissue, human lung tissue

IF/ICC: U2OS cells,

## Background Information

LTBP2, an extracellular glycoprotein mapping to chromosome 14q24, belongs to a family of latent TGF- $\beta$  binding proteins (LTBPs) that regulates a well-known growth factor, TGF- $\beta$ . LTBP2 is an elastic fiber-associating protein whose function in elastogenesis is not clear, as a DANCEbinding Protein. (PMID: 17581631) It may play an integral structural role in elastic-fiber architectural organization and/or assembly. LTBP2 associates covalently with small latent TGF-beta complex via Repeat B and Repeat C. Defects in LTBP2 are the cause of primary congenital glaucoma type 3D (GLC3D). [MIM:613086] LTBP2 is a role in the structural stability of ciliary zonules, and growth and development of lens.(PMID: 20617341) LTBP2 null mutations in an autosomal recessive ocular syndrome with megalocornea, spherophakia, and secondary glaucoma (PMID: 20179738). LTBP2 is a biomarker of heart failure. LTBP2 has a molecular weight of 260 kDa (PMID: 20878956), and even larger molecular weights of 290 and 310 kDa were detected in tissue extracts. (PMID: 8524260)

## Notable Publications

Author	Pubmed ID	Journal	Application
Yuanping Hai	40398921	J Clin Endocrinol Metab	IHC

## Storage

Storage:

Store at -20°C. Stable for one year after shipment.

Storage Buffer:

PBS with 0.02% sodium azide and 50% glycerol, pH7.3

Aliquoting is unnecessary for -20°C storage

For technical support and original validation data for this product please contact:

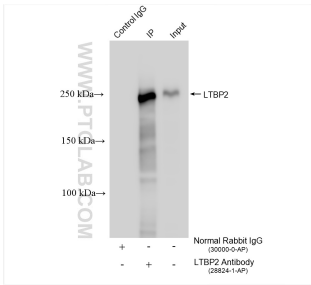
T: 4006900926

E: [Proteintech-CN@ptglab.com](mailto:Proteintech-CN@ptglab.com)

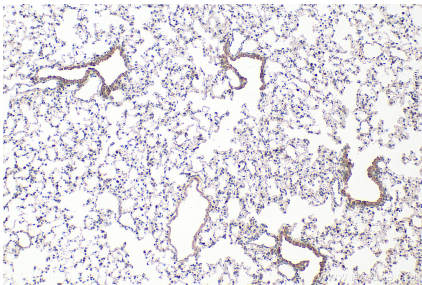
W: [ptgcn.com](http://ptgcn.com)

**This product is exclusively available under Proteintech Group brand and is not available to purchase from any other manufacturer.**

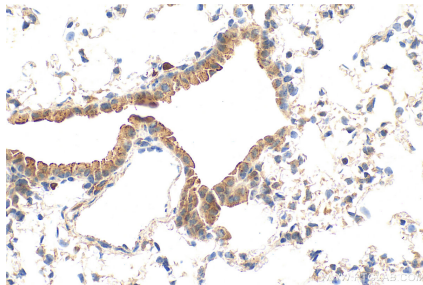
Selected Validation Data



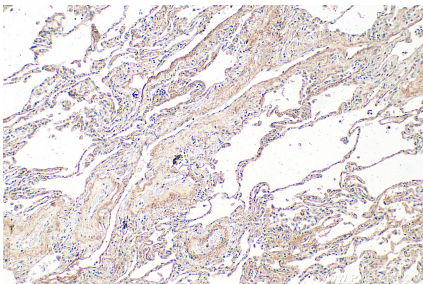
IP result of anti-LTBP2 (IP:28824-1-AP, 4ug; Detection:28824-1-AP 1:600) with U2OS cells lysate 1840 ug.



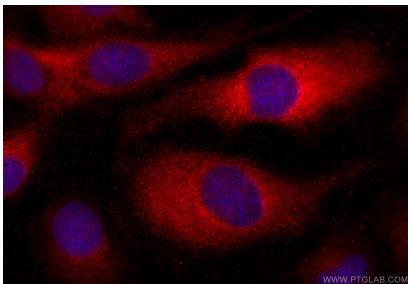
Immunohistochemical analysis of paraffin-embedded mouse lung tissue slide using 28824-1-AP (LTBP2 antibody) at dilution of 1:200 (under 10x lens). Heat mediated antigen retrieval with Tris-EDTA buffer (pH 9.0).



Immunohistochemical analysis of paraffin-embedded mouse lung tissue slide using 28824-1-AP (LTBP2 antibody) at dilution of 1:200 (under 40x lens). Heat mediated antigen retrieval with Tris-EDTA buffer (pH 9.0).



Immunohistochemical analysis of paraffin-embedded human lung tissue slide using 28824-1-AP (LTBP2 antibody) at dilution of 1:200 (under 10x lens). Heat mediated antigen retrieval with Tris-EDTA buffer (pH 9.0).



Immunofluorescent analysis of (-20°C Ethanol) fixed U2OS cells using LTBP2 antibody (28824-1-AP) at dilution of 1:400 and CoraLite®594-Conjugated Goat Anti-Rabbit IgG(H+L) (SA00013-4).