

For Research Use Only

WIPI2 Polyclonal antibody

Catalog Number: 28820-1-AP

5 Publications



Basic Information

Catalog Number:

28820-1-AP

Size:

450 µg/ml

Source:

Rabbit

Isotype:

IgG

Immunogen Catalog Number:

AG30505

GenBank Accession Number:

BC004116

GeneID (NCBI):

26100

UNIPROT ID:

Q9Y4P8

Full Name:

WD repeat domain, phosphoinositide interacting 2

Calculated MW:

49 kDa

Observed MW:

49 kDa

Purification Method:

Antigen affinity purification

Recommended Dilutions:

WB 1:2000-1:16000

IHC 1:250-1:1000

IF/ICC 1:200-1:800

Applications

Tested Applications:

WB, IHC, IF/ICC, ELISA

Cited Applications:

WB, IF

Species Specificity:

Human, mouse

Cited Species:

human, mouse, rat

Note-IHC: suggested antigen retrieval with TE buffer pH 9.0; (*) Alternatively, antigen retrieval may be performed with citrate buffer pH 6.0

Positive Controls:

WB : HeLa cells, RAW 264.7 cells

IHC : human heart tissue, mouse testis tissue

IF/ICC : HeLa cells,

Background Information

WIPI2, the mammalian homologue of the yeast ATG18 gene, plays a key role in autophagy. It binds the omegasome, a phosphatidylinositol 3-phosphate (PI3P) rich domain of the endoplasmic reticulum from which the mature autophagosome develops. Western blotting detected a 49 kDa WIPI2 band.(PMID: 30968111, PMID: 30403914)

Notable Publications

Author	Pubmed ID	Journal	Application
Carlos Ayala Torres	39723606	Autophagy	IF
Jiaming Nie	39361436	Adv Sci (Weinh)	IF
Peiran Feng	39117783	Cell Death Differ	WB

Storage

Storage:

Store at -20°C. Stable for one year after shipment.

Storage Buffer:

PBS with 0.02% sodium azide and 50% glycerol pH 7.3.

Aliquoting is unnecessary for -20°C storage

For technical support and original validation data for this product please contact:

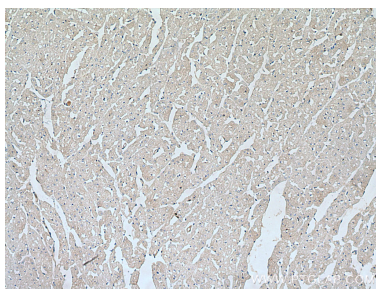
T: 4006900926

E: Proteintech-CN@ptglab.com

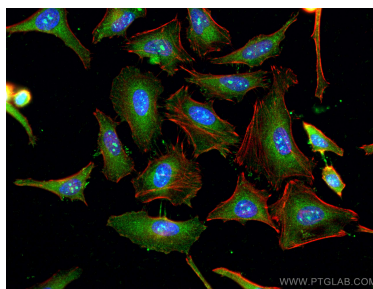
W: ptgcn.com

This product is exclusively available under Proteintech Group brand and is not available to purchase from any other manufacturer.

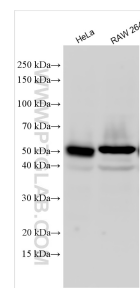
Selected Validation Data



Immunohistochemical analysis of paraffin-embedded human heart tissue slide using 28820-1-AP (WIP12 antibody) at dilution of 1:500 (under 10x lens). Heat mediated antigen retrieval with Tris-EDTA buffer (pH 9.0).



Immunofluorescent analysis of (-20°C Ethanol) fixed HeLa cells using WIP12 antibody (28820-1-AP) at dilution of 1:400 and CoraLite® 488-Conjugated Goat Anti-Rabbit IgG(H+L), CL594-phalloidin (red).



Various lysates were subjected to SDS PAGE followed by western blot with 28820-1-AP (WIP12 antibody) at dilution of 1:8000 incubated at room temperature for 1.5 hours.