

For Research Use Only

MEF2A Polyclonal antibody

Catalog Number: 28819-1-AP

1 Publications



Basic Information

Catalog Number: 28819-1-AP	GenBank Accession Number: BC013437	Purification Method: Antigen affinity purification
Concentration: 350 µg/ml	GeneID (NCBI): 4205	Recommended Dilutions: WB 1:500-1:2000 IHC 1:50-1:500
Source: Rabbit	UNIPROT ID: Q02078	
Isotype: IgG	Full Name: myocyte enhancer factor 2A	
Immunogen Catalog Number: AG30349	Calculated MW: 499 aa, 54 kDa Observed MW: 50-70kDa	

Applications

Tested Applications: WB, IHC, ELISA	Positive Controls: WB : HUVEC cells, SH-SY5Y cells, THP-1 cells IHC : rat brain tissue,
Cited Applications: WB, IF	
Species Specificity: Human, mouse, rat	
Cited Species: mouse	
Note-IHC: suggested antigen retrieval with TE buffer pH 9.0; (*) Alternatively, antigen retrieval may be performed with citrate buffer pH 6.0	

Background Information

MEF2A belongs to a family of DNA binding regulatory proteins. Each of these proteins which belong to the myocyte-specific enhancer factor-2 (MEF2) family binds to the MEF2 target DNA sequence present in the regulatory regions of many, if not all, muscle-specific genes. MEF2A plays diverse roles in the control of cell growth, survival and apoptosis via p38 MAPK signaling in muscle-specific and/or growth factor-related transcription. MEF2A also has key roles in cardiac and skeletal muscle development. MEF2A is especially abundant in granule neurons of the cerebellar cortex throughout the period of synaptogenesis. This antibody can detect two bands around 60 kDa to 70 kDa, the larger band may correspond to its post-translational modifications.(PMID: 15483225,16484498, 23486945)

Notable Publications

Author	Pubmed ID	Journal	Application
Lingjun Tong	39637583	Biomaterials	WB,IF

Storage

Storage:
Store at -20°C. Stable for one year after shipment.
Storage Buffer:
PBS with 0.02% sodium azide and 50% glycerol pH 7.3.
Aliquoting is unnecessary for -20°C storage

For technical support and original validation data for this product please contact:

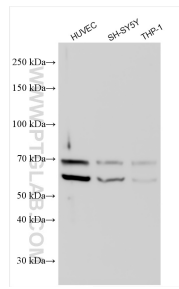
T: 4006900926

E: Proteintech-CN@ptglab.com

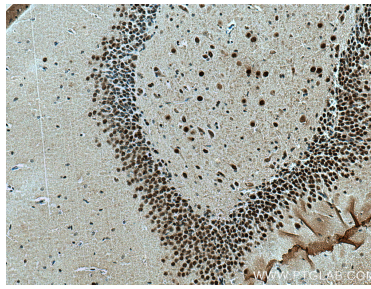
W: ptgcn.com

This product is exclusively available under Proteintech Group brand and is not available to purchase from any other manufacturer.

Selected Validation Data



Various lysates were subjected to SDS PAGE followed by western blot with 28819-1-AP (MEF2A antibody) at dilution of 1:1000 incubated at room temperature for 1.5 hours.



Immunohistochemical analysis of paraffin-embedded rat brain tissue slide using 28819-1-AP (MEF2A antibody) at dilution of 1:200 (under 10x lens). Heat mediated antigen retrieval with Tris-EDTA buffer (pH 9.0).