

For Research Use Only

Phospho-Chk1 (Ser345) Polyclonal antibody

Catalog Number: 28803-1-AP

4 Publications



Basic Information

Catalog Number:

28803-1-AP

Concentration:

550 ug/ml

Source:

Rabbit

Isotype:

IgG

GenBank Accession Number:

BC004202

GeneID (NCBI):

1111

UNIPROT ID:

O14757

Full Name:

CHK1 checkpoint homolog (S. pombe)

Calculated MW:

54 kDa

Observed MW:

50 kDa

Purification Method:

Antigen affinity purification

Recommended Dilutions:

WB 1:500-1:2000

IF/ICC 1:200-1:800

Applications

Tested Applications:

WB, IF/ICC, ELISA

Cited Applications:

WB

Species Specificity:

human, mouse

Cited Species:

human

Positive Controls:

WB : Calyculin A treated NIH/3T3 cells, Calyculin A treated HeLa cells

IF/ICC : Calyculin A treated HeLa cells,

Background Information

The checkpoint kinase 1 (Chk1) is a conserved kinase that imposes cell cycle delays in response to impediments to DNA replication. Chk1 kinase is downstream of the ATR kinase. ATR phosphorylates Chk1 kinase and other proteins to ensure replication is being blocked as to avoid replication fork collapse and DNA damage. Activation of Chk1 involves phosphorylation at Ser317 and Ser345 by ATM/ATR, followed by autophosphorylation of Ser296. In vitro Chk1 binds to and phosphorylate the dual-specificity protein phosphatases Cdc25A, Cdc25B, and Cdc25C, which control cell cycle transitions by dephosphorylating cyclin-dependent kinases. (PMID:22941630, PMID: 32571801, PMID:19276361)

Notable Publications

Author	Pubmed ID	Journal	Application
Peng Xu	39435731	Cancer Sci	WB
Pengyu Geng	39343971	J Exp Clin Cancer Res	WB
Mengmeng Li	38006806	Phytomedicine	WB

Storage

Storage:

Store at -20°C. Stable for one year after shipment.

Storage Buffer:

PBS with 0.02% sodium azide and 50% glycerol, pH7.3

Aliquoting is unnecessary for -20°C storage

For technical support and original validation data for this product please contact:

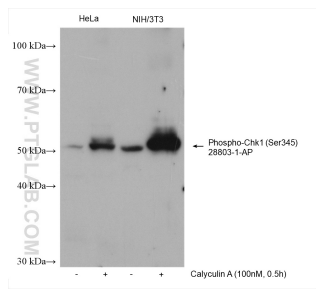
T: 4006900926

E: Proteintech-CN@ptglab.com

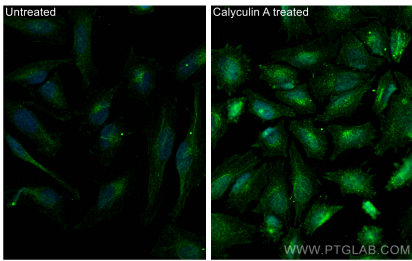
W: ptgcn.com

This product is exclusively available under Proteintech Group brand and is not available to purchase from any other manufacturer.

Selected Validation Data



Non-treated and Calyculin A treated cells were subjected to SDS PAGE followed by western blot with 28803-1-AP (Phospho-Chk1 (Ser345) antibody) at dilution of 1:1000 incubated at room temperature for 1 hours.



Immunofluorescent analysis of (4% PFA) fixed Calyculin A treated HeLa cells using Phospho-Chk1 (Ser345) antibody (28803-1-AP) at dilution of 1:400 and CoraLite®488-Conjugated AffiniPure Goat Anti-Rabbit IgG(H+L).