

For Research Use Only

# Phospho-CREB1 (Ser133) Polyclonal antibody

Catalog Number: 28792-1-AP

35 Publications



## Basic Information

Catalog Number:

28792-1-AP

Concentration:

450 ug/ml

Source:

Rabbit

Isotype:

IgG

GenBank Accession Number:

BC010636

GeneID (NCBI):

1385

UNIPROT ID:

P16220

Full Name:

cAMP responsive element binding protein 1

Calculated MW:

341 aa, 35 kDa

Observed MW:

35-46 kDa

Purification Method:

Antigen affinity purification

Recommended Dilutions:

WB 1:1000-1:8000

IHC 1:50-1:500

## Applications

Tested Applications:

WB, IHC, ELISA

Cited Applications:

WB, IF

Species Specificity:

human, mouse, rat

Cited Species:

human, mouse, rat

**Note-IHC: suggested antigen retrieval with TE buffer pH 9.0; (\*) Alternatively, antigen retrieval may be performed with citrate buffer pH 6.0**

Positive Controls:

WB : Forskolin treated HSC-T6 cells, HeLa cells, NIH/3T3 cells, Forskolin treated NIH/3T3 cells

IHC : human liver tissue,

## Background Information

The cAMP-response element binding protein (CREB) is localized in the nucleus and acts as a transcription factor, which binds to the cAMP response element (CRE) of the promoters of its target genes, upon phosphorylation at Ser133 by different receptor-activated protein kinases, such as protein kinase A (PKA), calmodulin-dependent protein kinase (CaMK), mitogen-activated protein kinases (MAPK), and other kinases. The activity of CREB1 in neurons has been correlated with various intracellular processes, including proliferation, differentiation, survival, long-term synaptic potentiation, neurogenesis, and neuronal plasticity. CREB1 belongs to the CREB/activating transcription factor (ATF) family of transcription factors. The antibody also detects the phosphorylated form of the CREB-related protein ATF1. (PMID: 30214393, PMID: 33917483, PMID: 32605164)

## Notable Publications

Author	Pubmed ID	Journal	Application
Peng Xu	35278661	Brain Res Bull	WB
Xiaoye Fan	36608590	Redox Biol	WB
Susumu Ohya	35955737	Int J Mol Sci	WB

## Storage

Storage:

Store at -20°C. Stable for one year after shipment.

Storage Buffer:

PBS with 0.02% sodium azide and 50% glycerol, pH7.3

Aliquoting is unnecessary for -20°C storage

For technical support and original validation data for this product please contact:

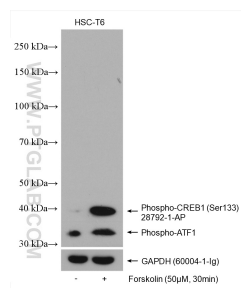
T: 4006900926

E: [Proteintech-CN@ptglab.com](mailto:Proteintech-CN@ptglab.com)

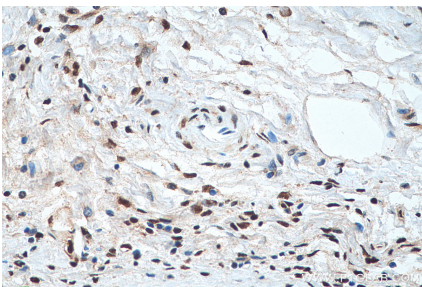
W: [ptgcn.com](http://ptgcn.com)

**This product is exclusively available under Proteintech Group brand and is not available to purchase from any other manufacturer.**

## Selected Validation Data



Non-treated and Forskolin treated HSC-T6 cells were subjected to SDS PAGE followed by western blot with 28792-1-AP (Phospho-CREB1 (Ser133) antibody) at dilution of 1:4000 incubated at room temperature for 1 hours. The membrane was stripped and re-blotted with GAPDH antibody as loading control.



Immunohistochemical analysis of paraffin-embedded human liver tissue slide using 28792-1-AP (Phospho-CREB1 (Ser133) antibody) at dilution of 1:200 (under 40x lens). Heat mediated antigen retrieval with Tris-EDTA buffer (pH 9.0).