

KCC2/SLC12A5 Polyclonal antibody

Catalog Number: 28724-1-AP

1 Publications

Basic Information

Catalog Number:

28724-1-AP

Size:

600 µg/ml

Source:

Rabbit

Isotype:

IgG

Immunogen Catalog Number:

AG30203

GenBank Accession Number:

BC132670

GeneID (NCBI):

57468

UNIPROT ID:

Q9H2X9

Full Name:

solute carrier family 12 (potassium-chloride transporter), member 5

Observed MW:

130-150 kDa

Purification Method:

Antigen affinity purification

Recommended Dilutions:

WB 1:1000-1:6000

IHC 1:500-1:2000

IF-P 1:50-1:500

Applications

Tested Applications:

IF-P, IHC, WB, ELISA

Cited Applications:

WB

Species Specificity:

Human, Mouse, Rat

Cited Species:

human

Note-IHC: suggested antigen retrieval with *TE buffer pH 9.0*; (*) Alternatively, antigen retrieval may be performed with *citrate buffer pH 6.0*

Positive Controls:

WB : mouse brain tissue,

IHC : rat brain tissue, mouse brain tissue

IF-P : mouse cerebellum tissue,

Background Information

KCC2, encoded by SLC12A5, is a neuron-specific K⁺-Cl⁻ cotransporter that is essential for Cl⁻ homeostasis and inhibitory synaptic transmission in brain. KCC2 is expressed at high levels in neurons throughout the nervous system. KCC2 deletion caused animal death. Alterations of KCC2 have been linked to neuropathic pain, temporal lobe epilepsy, and other diseases.

Notable Publications

Author	Pubmed ID	Journal	Application
Xiaolei Huang	38744853	Cell Death Dis	WB

Storage

Storage:

Store at -20°C. Stable for one year after shipment.

Storage Buffer:

PBS with 0.02% sodium azide and 50% glycerol pH 7.3.

Aliquoting is unnecessary for -20°C storage

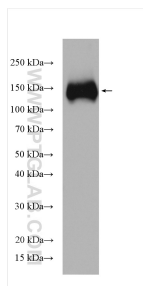
For technical support and original validation data for this product please contact:

T: 4006900926

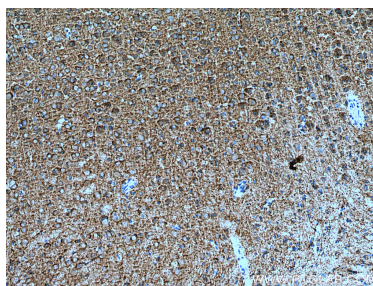
E: Proteintech-CN@ptglab.comW: ptgcn.com

This product is exclusively available under Proteintech Group brand and is not available to purchase from any other manufacturer.

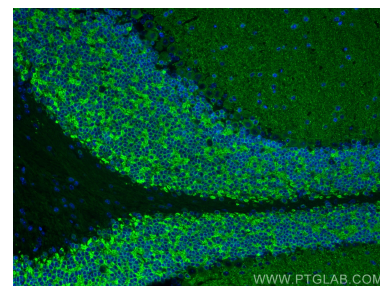
Selected Validation Data



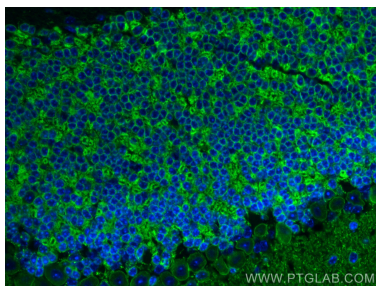
mouse brain tissue were subjected to SDS PAGE followed by western blot with 28724-1-AP (KCC2 antibody) at dilution of 1:3000 incubated at room temperature for 1.5 hours.



Immunohistochemical analysis of paraffin-embedded rat brain tissue slide using 28724-1-AP (KCC2 antibody) at dilution of 1:1000 (under 10x lens). Heat mediated antigen retrieval with Tris-EDTA buffer (pH 9.0).



Immunofluorescent analysis of (4% PFA) fixed mouse cerebellum tissue using KCC2/SLC12A5 antibody (28724-1-AP) at dilution of 1:200 and CoraLite®488-Conjugated AffiniPure Goat Anti-Rabbit IgG(H+L).



Immunofluorescent analysis of (4% PFA) fixed mouse cerebellum tissue using KCC2/SLC12A5 antibody (28724-1-AP) at dilution of 1:200 and CoraLite®488-Conjugated AffiniPure Goat Anti-Rabbit IgG(H+L).