

For Research Use Only

# IFN-gamma Polyclonal antibody

Catalog Number: 28722-1-AP



## Basic Information

Catalog Number:

28722-1-AP

Size:

450 ug/ml

Source:

Rabbit

Isotype:

IgG

Immunogen Catalog Number:

AG30371

GenBank Accession Number:

BC070256

GeneID (NCBI):

3458

ENSEMBL Gene ID:

ENSG00000111537

UNIPROT ID:

P01579

Full Name:

IFN gamma

Calculated MW:

166 aa, 19 kDa

Observed MW:

20-25 kDa

Purification Method:

Antigen affinity purification

Recommended Dilutions:

WB 1:500-1:2000

## Applications

Tested Applications:

WB, ELISA

Species Specificity:

human

Positive Controls:

WB : PMA, Ionomycin and Brefeldin A treated NK-92 cells,

## Background Information

Interferon gamma (IFNG) is a soluble cytokine that is the only member of the type II class of interferons. It is secreted by Th1 cells, cytotoxic T cells and NK cells. The cytokine is associated with antiviral, immunoregulatory and anti-tumor properties and is a potent activator of macrophages. It plays crucial roles in pathogen clearance. Aberrant IFNG expression is associated with a number of autoinflammatory and autoimmune diseases. It has been identified in many studies as a biomarker for pleural tuberculosis (TB). Mutations in this gene are associated with aplastic anemia.

## Storage

Storage:

Store at -20°C. Stable for one year after shipment.

Storage Buffer:

PBS with 0.02% sodium azide and 50% glycerol pH 7.3.

Aliquoting is unnecessary for -20°C storage

For technical support and original validation data for this product please contact:

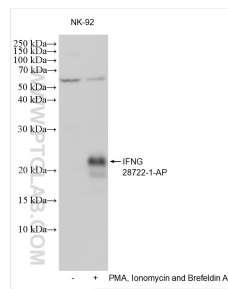
T: 4006900926

E: [Proteintech-CN@ptglab.com](mailto:Proteintech-CN@ptglab.com)

W: [ptgcn.com](http://ptgcn.com)

This product is exclusively available under Proteintech Group brand and is not available to purchase from any other manufacturer.

## Selected Validation Data



Non-treated, PMA, Ionomycin and Brefeldin A treated NK-92 cells were subjected to SDS PAGE followed by western blot with 28722-1-AP (IFNG antibody) at dilution of 1:1000 incubated at room temperature for 1.5 hours.