

For Research Use Only

# METAP1 Polyclonal antibody

Catalog Number: 28702-1-AP



## Basic Information

<b>Catalog Number:</b> 28702-1-AP	<b>GenBank Accession Number:</b> NM_015143	<b>Purification Method:</b> Antigen affinity purification
<b>Size:</b> 850 µg/ml	<b>GeneID (NCBI):</b> 23173	<b>Recommended Dilutions:</b> WB 1:1000-1:8000
<b>Source:</b> Rabbit	<b>UNIPROT ID:</b> P53582	
<b>Isotype:</b> IgG	<b>Full Name:</b> methionyl aminopeptidase 1	
<b>Immunogen Catalog Number:</b> AG29828	<b>Calculated MW:</b> 43 kDa	
	<b>Observed MW:</b> 40-43 kDa	

## Applications

<b>Tested Applications:</b> WB, ELISA	<b>Positive Controls:</b> WB : HEK-293 cells, A375 cells, HCT-116 cells, HUVEC cells, HeLa cells
<b>Species Specificity:</b> Human	

## Background Information

METAP1 (methionyl aminopeptidase 1), also known as MAP1A or MetAP1A, is expected to be located in cytosol and widely expressed in esophagus and testis. The calculated molecular weight of METAP1 is 43 kDa. METAP1 is expected to have aminopeptidase activity and metallo-exopeptidase activity. It is also involved in platelet aggregation. At the same time, HsMetAP1 participates in co-translation to remove N-terminal methionine from newborn protein. Studies have shown that when HsMetAP1 is knocked down by gene-specific siRNA, cells show slow progress in G(2)/M phase, which is similar to cells treated with MetAP1 inhibitors. Importantly, MetAP1 inhibitors can induce apoptosis of leukemia cell lines, which may be the result of their interference with G(2)/M checkpoint. Therefore, it is necessary for normal cell cycle, especially in G(2)/M phase of cell cycle, and it can be used as a promising target for discovering and developing new anticancer drugs (PMID: 17114291).

## Storage

**Storage:**  
Store at -20°C. Stable for one year after shipment.  
**Storage Buffer:**  
PBS with 0.02% sodium azide and 50% glycerol pH 7.3.  
Aliquoting is unnecessary for -20°C storage

For technical support and original validation data for this product please contact:

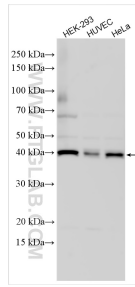
T: 4006900926

E: [Proteintech-CN@ptglab.com](mailto:Proteintech-CN@ptglab.com)

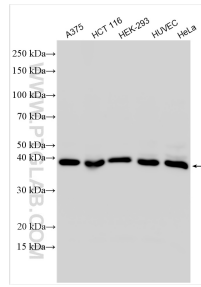
W: [ptgcn.com](http://ptgcn.com)

**This product is exclusively available under Proteintech Group brand and is not available to purchase from any other manufacturer.**

## Selected Validation Data



Various lysates were subjected to SDS PAGE followed by western blot with 28702-1-AP (METAP1 antibody) at dilution of 1:4000 incubated at room temperature for 1.5 hours.



Various lysates were subjected to SDS PAGE followed by western blot with 28702-1-AP (METAP1 antibody) at dilution of 1:5000 incubated at room temperature for 1.5 hours.