

For Research Use Only

CEP192 Polyclonal antibody

Catalog Number: 28700-1-AP



Basic Information

Catalog Number:

28700-1-AP

Size:

1000 μ g/ml

Source:

Rabbit

Isotype:

IgG

Immunogen Catalog Number:

AG29930

GenBank Accession Number:

NM_032142

GeneID (NCBI):

55125

UNIPROT ID:

Q8TEP8

Full Name:

centrosomal protein 192kDa

Calculated MW:

297 kDa

Observed MW:

280-300 kDa

Purification Method:

Antigen affinity purification

Recommended Dilutions:

WB 1:1000-1:8000

IF/ICC 1:50-1:500

Applications

Tested Applications:

IF/ICC, WB, ELISA

Species Specificity:

Human

Positive Controls:

WB : HEK-293 cells, HeLa cells

IF/ICC : HeLa cells,

Background Information

CEP192, also named PP8407 and KIAA1569, interacts with SHBG. It is required for mitotic centrosome and spindle assembly. CEP192 appears to be a major regulator of pericentriolar material (PCM) recruitment, centrosome maturation, and centriole duplication.

Storage

Storage:

Store at -20°C. Stable for one year after shipment.

Storage Buffer:

PBS with 0.02% sodium azide and 50% glycerol pH 7.3.

Aliquoting is unnecessary for -20°C storage

For technical support and original validation data for this product please contact:

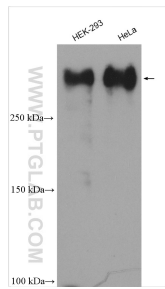
T: 4006900926

E: Proteintech-CN@ptglab.com

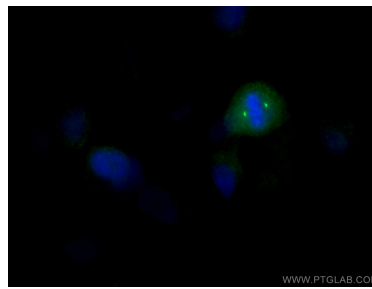
W: ptgcn.com

This product is exclusively available under Proteintech Group brand and is not available to purchase from any other manufacturer.

Selected Validation Data



Various lysates were subjected to SDS PAGE followed by western blot with 28700-1-AP (CEP192 antibody) at dilution of 1:4000 incubated at room temperature for 1.5 hours.



Immunofluorescent analysis of (4% PFA) fixed HeLa cells using 28700-1-AP (CEP192 antibody), at dilution of 1:200 and CoraLite®488-Conjugated AffiniPure Goat Anti-Rabbit IgG(H+L).