

GREB1 Polyclonal antibody

Catalog Number: 28699-1-AP

2 Publications

Basic Information

Catalog Number:

28699-1-AP

Size:

800 µg/ml

Source:

Rabbit

Isotype:

IgG

Immunogen Catalog Number:

AG29908

GenBank Accession Number:

NM_014668

GeneID (NCBI):

9687

UNIPROT ID:

Q4ZG55

Full Name:

GREB1 protein

Calculated MW:

216 kDa

Observed MW:

216-240 kDa

Purification Method:

Antigen affinity purification

Recommended Dilutions:

WB 1:1000-1:6000

IHC 1:50-1:500

IF/ICC 1:50-1:500

Applications

Tested Applications:

WB, IF/ICC, IHC, ELISA

Cited Applications:

WB

Species Specificity:

Human

Cited Species:

human

Note-IHC: suggested antigen retrieval with TE buffer pH 9.0; (*) Alternatively, antigen retrieval may be performed with citrate buffer pH 6.0

Positive Controls:

WB : HepG2 cells, MCF-7 cells

IHC : human liver tissue,

IF/ICC : HepG2 cells,

Background Information

GREB1 (Gene regulated by estrogen in breast cancer protein1) encodes a 1949-amino acid protein that contains an N-terminal Zn-binding domain followed by a circularly permuted catalytically inactive superfamily II helicase domain and a C-terminal Fringe-like GT domain. GREB1 is an early estrogen-responsive gene, and its expression is correlated with estrogen levels in breast cancer patients. GREB1 is implicated in hormone-dependent cancers, such as ovarian, prostate cancer and as a risk factor in endometriosis and variations in bone mineral density.

Notable Publications

Author	Pubmed ID	Journal	Application
Aaron Waddell	34199844	Cancers (Basel)	WB
Xuan Li	37935981	Cancer Gene Ther	

Storage

Storage:

Store at -20°C. Stable for one year after shipment.

Storage Buffer:

PBS with 0.02% sodium azide and 50% glycerol pH 7.3.

Aliquoting is unnecessary for -20°C storage

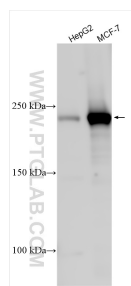
For technical support and original validation data for this product please contact:

T: 4006900926

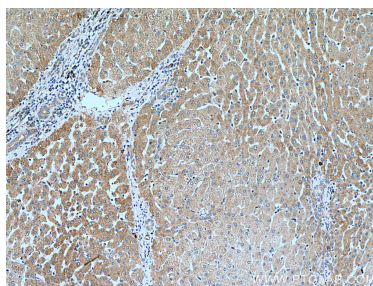
E: Proteintech-CN@ptglab.comW: ptgcn.com

This product is exclusively available under Proteintech Group brand and is not available to purchase from any other manufacturer.

Selected Validation Data



Various lysates were subjected to SDS PAGE followed by western blot with 28699-1-AP (GREB1 antibody) at dilution of 1:3000 incubated at room temperature for 1.5 hours.



Immunohistochemical analysis of paraffin-embedded human liver tissue slide using 28699-1-AP (GREB1 antibody) at dilution of 1:200 (under 10x lens). Heat mediated antigen retrieval with Tris-EDTA buffer (pH 9.0).



Immunofluorescent analysis of (-20°C Ethanol) fixed HepG2 cells using GREB1 antibody (28699-1-AP) at dilution of 1:200 and CoraLite®488-Conjugated AffiniPure Goat Anti-Rabbit IgG(H+L).