

For Research Use Only

# SETD3 Polyclonal antibody

Catalog Number: 28692-1-AP



## Basic Information

<b>Catalog Number:</b> 28692-1-AP	<b>GenBank Accession Number:</b> NM_032233	<b>Purification Method:</b> Antigen affinity purification
<b>Size:</b> 700 µg/ml	<b>GeneID (NCBI):</b> 84193	<b>Recommended Dilutions:</b> WB 1:1000-1:8000 IHC 1:50-1:500
<b>Source:</b> Rabbit	<b>UNIPROT ID:</b> Q86TU7	
<b>Isotype:</b> IgG	<b>Full Name:</b> SET domain containing 3	
<b>Immunogen Catalog Number:</b> AG30017	<b>Calculated MW:</b> 67 kDa	
	<b>Observed MW:</b> 67 kDa	

## Applications

<b>Tested Applications:</b> IHC, WB, ELISA	<b>Positive Controls:</b> WB : MCF-7 cells, IHC : mouse small intestine tissue, mouse liver tissue
<b>Species Specificity:</b> Human	

**Note-IHC: suggested antigen retrieval with TE buffer pH 9.0; (\*) Alternatively, antigen retrieval may be performed with citrate buffer pH 6.0**

## Background Information

SETD3 (SET domain protein 3), a ubiquitously expressed protein, is epigenetically up-regulated in response to muscle loading and hypertrophy. The SETD3 mRNA is ubiquitously expressed at a similar basal level in most examined tissues, with the noticeable exception of the skeletal muscle, kidneys, and testes (PMID: 34685411). SETD3 deficient female mice have severely decreased litter sizes due to primary maternal dystocia that is refractory to ecobolic induction agents (PMID: 30626964).

## Storage

**Storage:**  
Store at -20°C. Stable for one year after shipment.  
**Storage Buffer:**  
PBS with 0.02% sodium azide and 50% glycerol pH 7.3.  
Aliquoting is unnecessary for -20°C storage

For technical support and original validation data for this product please contact:

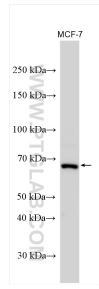
T: 4006900926

E: [Proteintech-CN@ptglab.com](mailto:Proteintech-CN@ptglab.com)

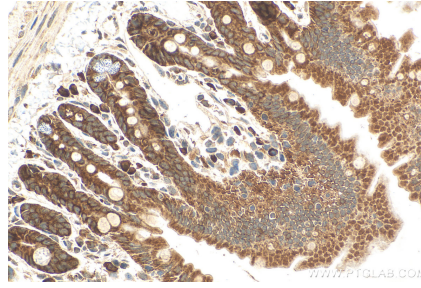
W: [ptgcn.com](http://ptgcn.com)

This product is exclusively available under Proteintech Group brand and is not available to purchase from any other manufacturer.

## Selected Validation Data



MCF-7 cells were subjected to SDS PAGE followed by western blot with 28692-1-AP (SETD3 antibody) at dilution of 1:4000 incubated at room temperature for 1.5 hours.



Immunohistochemical analysis of paraffin-embedded mouse small intestine tissue slide using 28692-1-AP (SETD3 antibody) at dilution of 1:200 (under 40x lens). Heat mediated antigen retrieval with Tris-EDTA buffer (pH 9.0).