

For Research Use Only

# SGLT2 Polyclonal antibody

Catalog Number: 28683-1-AP

2 Publications



## Basic Information

Catalog Number:

28683-1-AP

Concentration:

900 µg/ml

Source:

Rabbit

Isotype:

IgG

Immunogen Catalog Number:

AG30120

GenBank Accession Number:

BC131542

GeneID (NCBI):

6524

UNIPROT ID:

P31639

Full Name:

solute carrier family 5  
(sodium/glucose cotransporter),  
member 2

Calculated MW:

672 aa, 73 kDa

Observed MW:

73 kDa

Purification Method:

Antigen affinity purification

Recommended Dilutions:

WB 1:500-1:2000

IHC 1:50-1:500

IF-P 1:50-1:500

## Applications

Tested Applications:

WB, IHC, IF-P, ELISA

Cited Applications:

WB

Species Specificity:

Human, mouse, rat

Cited Species:

mouse, rat

**Note-IHC: suggested antigen retrieval with  
TE buffer pH 9.0; (\*) Alternatively, antigen  
retrieval may be performed with citrate  
buffer pH 6.0**

Positive Controls:

WB : mouse kidney tissue, rat kidney tissue

IHC : human kidney tissue, mouse kidney tissue

IF-P : mouse kidney tissue, rat kidney tissue

## Background Information

Sodium-glucose cotransporter 2 (SGLT2), encoded by SLC5A2, utilizes the electrochemical sodium gradient to transport glucose against the cell's internal concentration gradient. Mainly expressed on brush border membrane (BBM) of epithelial cells in the early segment of the proximal tubule, SGLT2 mediates most of the glucose reabsorption by the kidney overall. Inhibition of SGLT2 could improve glucose homeostasis of diabetic patients, which has been considered as a novel strategy for diabetes treatment.

## Notable Publications

Author	Pubmed ID	Journal	Application
Tomoko Kodama	39842419	Br J Pharmacol	WB
Sha Chen	39046464	Basic Res Cardiol	WB

## Storage

Storage:

Store at -20°C. Stable for one year after shipment.

Storage Buffer:

PBS with 0.02% sodium azide and 50% glycerol pH 7.3.

Aliquoting is unnecessary for -20°C storage

For technical support and original validation data for this product please contact:

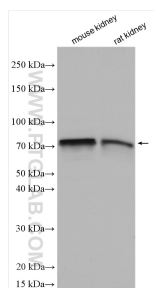
T: 4006900926

E: [Proteintech-CN@ptglab.com](mailto:Proteintech-CN@ptglab.com)

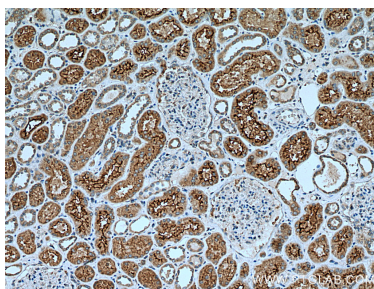
W: [ptgcn.com](http://ptgcn.com)

**This product is exclusively available under Proteintech Group brand and is not available to purchase from any other manufacturer.**

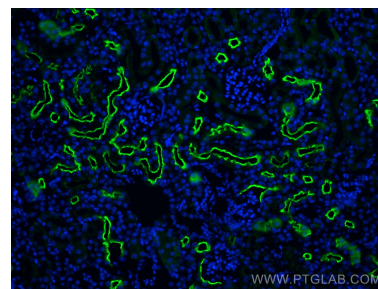
## Selected Validation Data



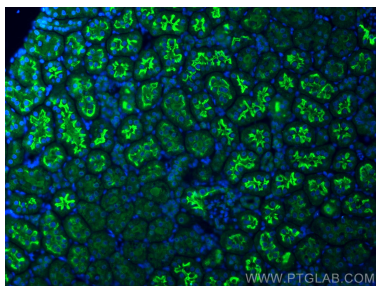
Various lysates were subjected to SDS PAGE followed by western blot with 28683-1-AP (SGLT2 antibody) at dilution of 1:1000 incubated at room temperature for 1.5 hours.



Immunohistochemical analysis of paraffin-embedded human kidney tissue slide using 28683-1-AP (SGLT2 antibody) at dilution of 1:200 (under 10x lens). Heat mediated antigen retrieval with Tris-EDTA buffer (pH 9.0).



Immunofluorescent analysis of (4% PFA) fixed mouse kidney tissue using SGLT2 antibody (28683-1-AP) at dilution of 1:200 and CoraLite®488-Conjugated Goat Anti-Rabbit IgG(H+L).



Immunofluorescent analysis of (4% PFA) fixed rat kidney tissue using SGLT2 antibody (28683-1-AP) at dilution of 1:200 and CoraLite®488-Conjugated Goat Anti-Rabbit IgG(H+L).