

SEC63 Polyclonal antibody

Catalog Number: 28665-1-AP

Basic Information

Catalog Number: 28665-1-AP	GenBank Accession Number: BC047221	Purification Method: Antigen affinity purification
Size: 500 µg/ml	GeneID (NCBI): 11231	Recommended Dilutions: WB 1:2000-1:12000
Source: Rabbit	UNIPROT ID: Q9UGP8	IHC 1:50-1:500 IF/ICC 1:200-1:800
Isotype: IgG	Full Name: SEC63 homolog (S. cerevisiae)	
Immunogen Catalog Number: AG30213	Calculated MW: 88 kDa Observed MW: 90 kDa	

Applications

Tested Applications: IF/ICC, IHC, WB, ELISA	Positive Controls:
Species Specificity: Human, mouse	WB : HEK-293 cells, HeLa cells, HepG2 cells
Note-IHC: suggested antigen retrieval with TE buffer pH 9.0; (*) Alternatively, antigen retrieval may be performed with citrate buffer pH 6.0	IHC : mouse pancreas tissue, human liver tissue
	IF/ICC : HEK-293 cells,

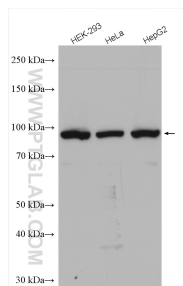
Background Information

SEC63 is a integral ER membrane protein. SEC63 and SEC62 form a dimeric complex and play a central role in translocation of nascent and newly synthesized precursor polypeptides into the ER. Mutations in the gene encoding SEC63 cause polycystic liver disease in humans. The intact SEC63 protein is usually detected around 83-90 kDa, while smaller cleavage products can be observed by autophagy proteolysis (PMID: 25052096)

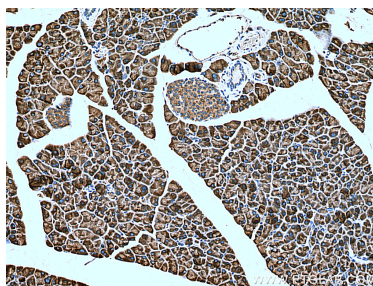
Storage

Storage:
Store at -20°C. Stable for one year after shipment.
Storage Buffer:
PBS with 0.02% sodium azide and 50% glycerol pH 7.3.
Aliquoting is unnecessary for -20°C storage

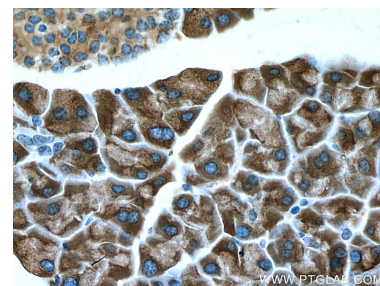
Selected Validation Data



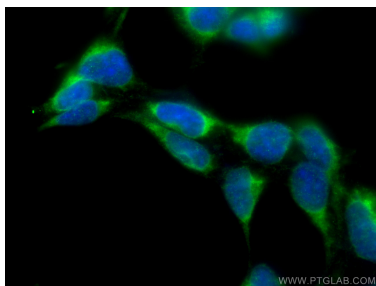
Various lysates were subjected to SDS PAGE followed by western blot with 28665-1-AP (SEC63 antibody) at dilution of 1:6000 incubated at room temperature for 1.5 hours.



Immunohistochemical analysis of paraffin-embedded mouse pancreas tissue slide using 28665-1-AP (SEC63 antibody) at dilution of 1:200 (under 10x lens). Heat mediated antigen retrieval with Tris-EDTA buffer (pH 9.0).



Immunohistochemical analysis of paraffin-embedded mouse pancreas tissue slide using 28665-1-AP (SEC63 antibody) at dilution of 1:200 (under 40x lens). Heat mediated antigen retrieval with Tris-EDTA buffer (pH 9.0).



Immunofluorescent analysis of (-20°C Ethanol) fixed HEK-293 cells using SEC63 antibody (28665-1-AP) at dilution of 1:400 and CoraLite®488-Conjugated AffiniPure Goat Anti-Rabbit IgG(H+L).