

For Research Use Only

# SARM1 Polyclonal antibody, PBS Only

Catalog Number: 28625-1-PBS



## Basic Information

Catalog Number:

28625-1-PBS

Source:

Rabbit

Isotype:

IgG

Immunogen Catalog Number:

AG29531

GenBank Accession Number:

NM\_015077

GeneID (NCBI):

23098

UNIPROT ID:

Q65ZW1

Full Name:

sterile alpha and TIR motif containing 1

Calculated MW:

79 kDa

Observed MW:

70-80 kDa

Purification Method:

Antigen affinity purification

## Applications

Tested Applications:

WB, IHC, IF/ICC, FC (Intra), Indirect ELISA

Species Specificity:

human, mouse, rat

## Background Information

SARM1 (sterile alpha and Toll/interleukin-1 receptor motif-containing 1) is also named as KIAA0524, SAMD2 and SARM. SARM1 is the major pro-degenerative protein in axons (PMID: 32152523). SARM1 is the central executioner of pathological axon degeneration and is an inducible NAD<sup>+</sup>-cleavage enzyme that is activated by the loss of the NAD<sup>+</sup> biosynthetic enzyme NMNAT2 (PMID: 33657413). SARM1 is involved in innate immune response: inhibits both TICAM1/TRIF- and MYD88-dependent activation of JUN/AP-1, TRIF-dependent activation of NF- $\kappa$ B and IRF3, and the phosphorylation of MAPK14/p38 (PMID: 16964262).

## Storage

Storage:

Store at -80°C.

**The product is shipped with ice packs. Upon receipt, store it immediately at -80°C**

Storage Buffer:

PBS only, pH7.3

For technical support and original validation data for this product please contact:

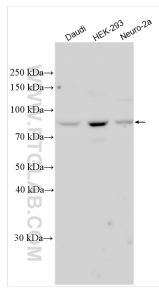
T: 4006900926

E: [Proteintech-CN@ptglab.com](mailto:Proteintech-CN@ptglab.com)

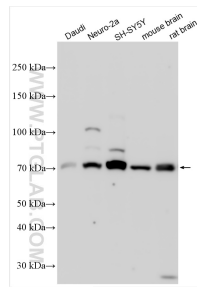
W: [ptgcn.com](http://ptgcn.com)

**This product is exclusively available under Proteintech Group brand and is not available to purchase from any other manufacturer.**

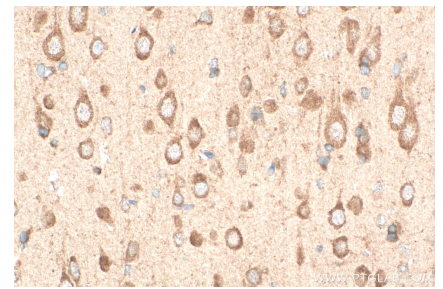
## Selected Validation Data



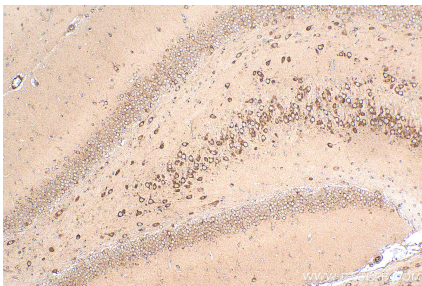
Various lysates were subjected to SDS PAGE followed by western blot with 28625-1-AP (SARM1 antibody) at dilution of 1:1500 incubated at room temperature for 1.5 hours. This data was developed using the same antibody clone with 28625-1-PBS in a different storage buffer formulation.



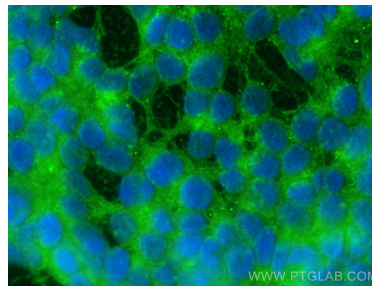
Various lysates were subjected to SDS PAGE followed by western blot with 28625-1-AP (SARM1 antibody) at dilution of 1:2000 incubated at room temperature for 1.5 hours. This data was developed using the same antibody clone with 28625-1-PBS in a different storage buffer formulation.



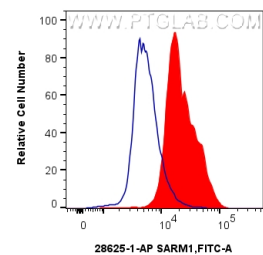
Immunohistochemical analysis of paraffin-embedded rat brain tissue slide using 28625-1-AP (SARM1 antibody) at dilution of 1:400 (under 40x lens). Heat mediated antigen retrieval with Tris-EDTA buffer (pH 9.0). This data was developed using the same antibody clone with 28625-1-PBS in a different storage buffer formulation.



Immunohistochemical analysis of paraffin-embedded rat brain tissue slide using 28625-1-AP (SARM1 antibody) at dilution of 1:400 (under 10x lens). Heat mediated antigen retrieval with Tris-EDTA buffer (pH 9.0). This data was developed using the same antibody clone with 28625-1-PBS in a different storage buffer formulation.



Immunofluorescent analysis of (-20°C Ethanol) fixed SH-SY5Y cells using SARM1 antibody (28625-1-AP) at dilution of 1:400 and CoraLite® 488-Conjugated AffiniPure Goat Anti-Rabbit IgG(H+L) (SA00013-2). This data was developed using the same antibody clone with 28625-1-PBS in a different storage buffer formulation.



$1 \times 10^6$  SH-SY5Y cells were intracellularly stained with 0.25 ug SARM1 Polyclonal antibody (28625-1-AP) and CoraLite® 488-Conjugated Goat Anti-Rabbit IgG(H+L) (SA00013-2)(red), or 0.25 ug Isotype Control (blue). Cells were fixed with 4% PFA and permeabilized with Flow Cytometry Perm Buffer (PF00017). This data was developed using the same antibody clone with 28625-1-PBS in a different storage buffer formulation.