

For Research Use Only

# SARM1 Polyclonal antibody

Catalog Number: 28625-1-AP



## Basic Information

Catalog Number:

28625-1-AP

Size:

500 µg/ml

Source:

Rabbit

Isotype:

IgG

Immunogen Catalog Number:

AG29531

GenBank Accession Number:

NM\_015077

GeneID (NCBI):

23098

UNIPROT ID:

Q6SZW1

Full Name:

sterile alpha and TIR motif containing

1

Calculated MW:

79 kDa

Observed MW:

70-80 kDa

Purification Method:

Antigen affinity purification

Recommended Dilutions:

WB 1:500-1:3000

IF 1:200-1:800

## Applications

Tested Applications:

WB, IF, ICC, ELISA

Species Specificity:

Human, mouse, rat

Positive Controls:

WB : Daudi cells, HEK-293 cells, Neuro-2a cells, Raji cells, human testis tissue, SH-SY5Y cells, mouse brain tissue, rat brain tissue

IF : SH-SY5Y cells,

## Background Information

SARM1 (sterile alpha and Toll/interleukin-1 receptor motif-containing 1) is also named as KIAA0524, SAMD2 and SARM. SARM1 is the major pro-degenerative protein in axons (PMID: 32152523). SARM1 is the central executioner of pathological axon degeneration and is an inducible NAD<sup>+</sup>-cleavage enzyme that is activated by the loss of the NAD<sup>+</sup> biosynthetic enzyme NMNAT2 (PMID: 33657413). SARM1 is involved in innate immune response: inhibits both TICAM1/TRIF- and MYD88-dependent activation of JUN/AP-1, TRIF-dependent activation of NF-kappa-B and IRF3, and the phosphorylation of MAPK14/p38 (PMID: 16964262).

## Storage

Storage:

Store at -20°C. Stable for one year after shipment.

Storage Buffer:

PBS with 0.02% sodium azide and 50% glycerol pH 7.3.

Aliquoting is unnecessary for -20°C storage

For technical support and original validation data for this product please contact:

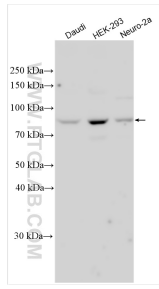
T: 4006900926

E: [Proteintech-CN@ptglab.com](mailto:Proteintech-CN@ptglab.com)

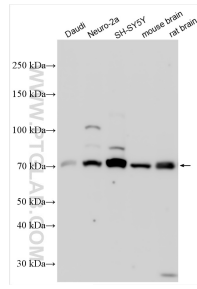
W: [ptgcn.com](http://ptgcn.com)

This product is exclusively available under Proteintech Group brand and is not available to purchase from any other manufacturer.

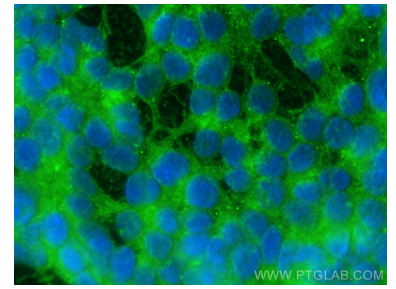
## Selected Validation Data



Various lysates were subjected to SDS PAGE followed by western blot with 28625-1-AP (SARM1 antibody) at dilution of 1:1500 incubated at room temperature for 1.5 hours.



Various lysates were subjected to SDS PAGE followed by western blot with 28625-1-AP (SARM1 antibody) at dilution of 1:2000 incubated at room temperature for 1.5 hours.



Immunofluorescent analysis of (-20°C Ethanol) fixed SH-SY5Y cells using SARM1 antibody (28625-1-AP) at dilution of 1:400 and CoraLite®488-Conjugated AffiniPure Goat Anti-Rabbit IgG(H+L) (SA00013-2).