

For Research Use Only

CDC2L1 Polyclonal antibody

Catalog Number: 28613-1-AP

Featured Product



Basic Information

Catalog Number:

28613-1-AP

Size:

850 ug/ml

Source:

Rabbit

Isotype:

IgG

Immunogen Catalog Number:

AG28743

GenBank Accession Number:

NM_001787

GeneID (NCBI):

984

UNIPROT ID:

P21127

Full Name:

cell division cycle 2-like 1 (PITSLRE proteins)

Calculated MW:

93 kDa

Observed MW:

110 kDa

Purification Method:

Antigen affinity purification

Recommended Dilutions:

WB 1:2000-1:16000

IHC 1:50-1:500

IF/ICC 1:50-1:500

Applications

Tested Applications:

WB, IHC, IF/ICC, ELISA

Species Specificity:

human

Note-IHC: suggested antigen retrieval with TE buffer pH 9.0; (*) Alternatively, antigen retrieval may be performed with citrate buffer pH 6.0

Positive Controls:

WB : HEK-293 cells, HeLa cells, HepG2 cells, Jurkat cells, SKOV-3 cells

IHC : human lung cancer tissue,

IF/ICC : HeLa cells, HUVEC cells

Background Information

CDK11 is encoded by two highly homologous genes known as CDC2L1 and CDC2L2. Due to the distinct structure and alternative RNA splicing, the CDC2L gene can produce three different CDK11 isoforms, a larger 110 kDa protein isoform, a mitosis-specific 58 kDa isoform, and a smaller apoptosis-specific 46 kDa isoform. (PMID 27049727)

Storage

Storage:

Store at -20°C. Stable for one year after shipment.

Storage Buffer:

PBS with 0.02% sodium azide and 50% glycerol pH 7.3.

Aliquoting is unnecessary for -20°C storage

For technical support and original validation data for this product please contact:

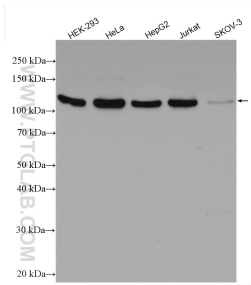
T: 4006900926

E: Proteintech-CN@ptglab.com

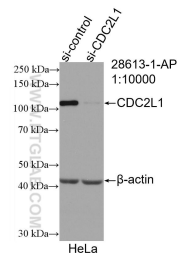
W: ptgcn.com

This product is exclusively available under Proteintech Group brand and is not available to purchase from any other manufacturer.

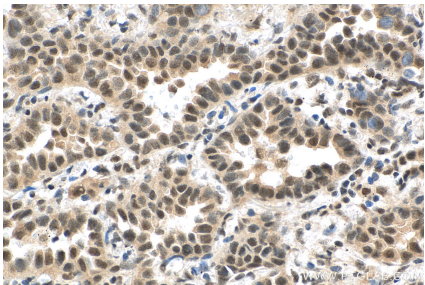
Selected Validation Data



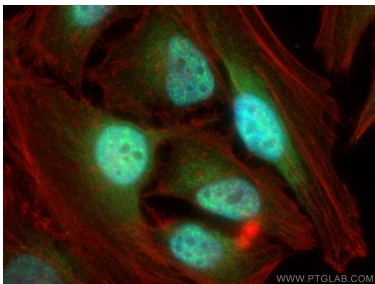
Various lysates were subjected to SDS PAGE followed by western blot with 28613-1-AP (CDC2L1 antibody) at dilution of 1:8000 incubated at room temperature for 1.5 hours.



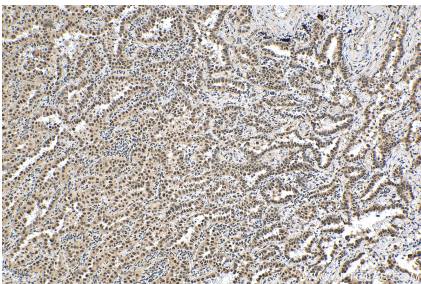
WB result of CDC2L1 antibody (28613-1-AP; 1:10000; incubated at room temperature for 1.5 hours) with sh-Control and sh-CDC2L1 transfected HeLa cells.



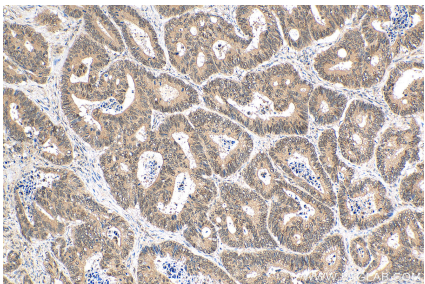
Immunohistochemical analysis of paraffin-embedded human lung cancer tissue slide using 28613-1-AP (CDC2L1 antibody) at dilution of 1:200 (under 40x lens). Heat mediated antigen retrieval with Tris-EDTA buffer (pH 9.0).



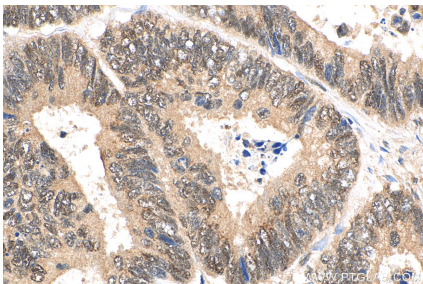
Immunofluorescent analysis of (4% PFA) fixed HeLa cells using CDC2L1 antibody (28613-1-AP) at dilution of 1:200 and CoraLite®488-Conjugated AffiniPure Goat Anti-Rabbit IgG(H+L), CL594-Phalloidin (red).



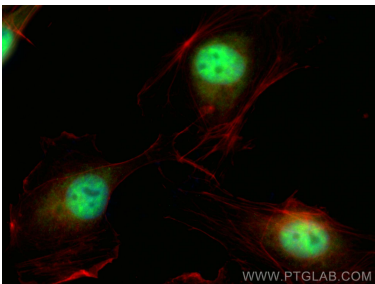
Immunohistochemical analysis of paraffin-embedded human lung cancer tissue slide using 28613-1-AP (CDC2L1 antibody) at dilution of 1:200 (under 10x lens). Heat mediated antigen retrieval with Tris-EDTA buffer (pH 9.0).



Immunohistochemical analysis of paraffin-embedded human colon cancer tissue slide using 28613-1-AP (CDC2L1 antibody) at dilution of 1:200 (under 10x lens). Heat mediated antigen retrieval with Tris-EDTA buffer (pH 9.0).



Immunohistochemical analysis of paraffin-embedded human colon cancer tissue slide using 28613-1-AP (CDC2L1 antibody) at dilution of 1:200 (under 40x lens). Heat mediated antigen retrieval with Tris-EDTA buffer (pH 9.0).



Immunofluorescent analysis of (4% PFA) fixed HUVEC cells using CDC2L1 antibody (28613-1-AP) at dilution of 1:200 and CoraLite®488-Conjugated AffiniPure Goat Anti-Rabbit IgG(H+L), CL594-phalloidin (red).