

For Research Use Only

# LPL Polyclonal antibody

Catalog Number: 28602-1-AP

2 Publications



## Basic Information

### Catalog Number:

28602-1-AP

### Size:

800 µg/ml

### Source:

Rabbit

### Isotype:

IgG

### GenBank Accession Number:

BC011353

### GeneID (NCBI):

4023

### UNIPROT ID:

P06858

### Full Name:

lipoprotein lipase

### Calculated MW:

475 aa, 53 kDa

### Observed MW:

55 kDa

### Purification Method:

Antigen affinity purification

### Recommended Dilutions:

WB 1:1000-1:6000

IHC 1:500-1:2000

## Applications

### Tested Applications:

WB, IHC, ELISA

### Cited Applications:

WB, IHC

### Species Specificity:

Human, mouse

### Cited Species:

human, mouse, sheep

### Positive Controls:

WB : HeLa cells,

IHC : mouse brown adipose tissue,

**Note-IHC: suggested antigen retrieval with TE buffer pH 9.0; (\*) Alternatively, antigen retrieval may be performed with citrate buffer pH 6.0**

## Background Information

Lipoprotein lipase (LPL) is a key enzyme in lipid and lipoprotein metabolism. The canonical role of LPL involves the hydrolysis of triglyceride-rich lipoproteins for the provision of FFAs to metabolic tissues. LPL is highly expressed in adipocytes and myocytes as well as macrophages. Its protein level and activity are tightly regulated by multiple mechanisms in response to the metabolic state and energy demands of the cell. (PMID: 33277156, PMID: 33172164)

## Notable Publications

| Author    | Pubmed ID | Journal         | Application |
|-----------|-----------|-----------------|-------------|
| Wei Zhang | 39691379  | Front Vet Sci   | WB          |
| Wei Chang | 38339301  | Cancers (Basel) | WB,IHC      |

## Storage

### Storage:

Store at -20°C. Stable for one year after shipment.

### Storage Buffer:

PBS with 0.02% sodium azide and 50% glycerol pH 7.3.

Aliquoting is unnecessary for -20°C storage

For technical support and original validation data for this product please contact:

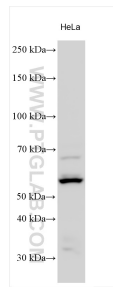
T: 4006900926

E: [Proteintech-CN@ptglab.com](mailto:Proteintech-CN@ptglab.com)

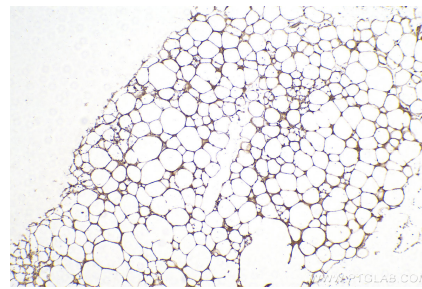
W: [ptgcn.com](http://ptgcn.com)

This product is exclusively available under Proteintech Group brand and is not available to purchase from any other manufacturer.

## Selected Validation Data



HeLa cells were subjected to SDS PAGE followed by western blot with 28602-1-AP (LPL antibody) at dilution of 1:3000 incubated at room temperature for 1.5 hours.



Immunohistochemical analysis of paraffin-embedded mouse brown adipose tissue slide using 28602-1-AP (LPL antibody) at dilution of 1:1000 (under 10x lens). Heat mediated antigen retrieval with Tris-EDTA buffer (pH 9.0).