

Siglec-15 Polyclonal antibody

Catalog Number: 28594-1-AP

Basic Information

Catalog Number:

28594-1-AP

Size:

700 µg/ml

Source:

Rabbit

Isotype:

IgG

Immunogen Catalog Number:

AG29829

GenBank Accession Number:

NM_213602

GeneID (NCBI):

284266

UNIPROT ID:

Q6ZMC9

Full Name:

sialic acid binding Ig-like lectin 15

Calculated MW:

36 kDa

Observed MW:

38-40 kDa

Purification Method:

Antigen affinity purification

Recommended Dilutions:

WB 1:2000-1:10000

Applications

Tested Applications:

WB, ELISA

Species Specificity:

Human

Positive Controls:

WB : A549 cells, NCI-H1299 cells, PC-3 cells

Background Information

Sialic acid binding Ig-like lectin 15 (Siglec-15) is a member of the Siglec family of glycan-recognition proteins. Siglec-15 is a type-I transmembrane protein consisting of two immunoglobulin (Ig)-like domains, a transmembrane domain, and a short cytoplasmic tail (PMID: 17483134). It is mainly expressed on a subset of myeloid lineage cells and can be upregulated in many cancers (PMID: 32939323). Siglec-15 has been reported as an immune suppressor and a potential target for normalization cancer immunotherapy (PMID: 30833750). Siglec-15 has a calculated molecular weight of 36 kDa. It has been detected at 38-40 kDa due to glycosylation (PMID: 32921411).

Storage

Storage:

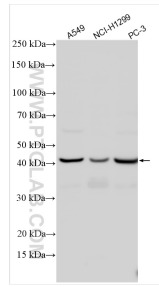
Store at -20°C. Stable for one year after shipment.

Storage Buffer:

PBS with 0.02% sodium azide and 50% glycerol pH 7.3.

Aliquoting is unnecessary for -20°C storage

Selected Validation Data



Various lysates were subjected to SDS PAGE followed by western blot with 28594-1-AP (Siglec-15 antibody) at dilution of 1:5000 incubated at room temperature for 1.5 hours.