

For Research Use Only

# APOL3 Polyclonal antibody, PBS Only

Catalog Number:28591-1-PBS



## Basic Information

Catalog Number:

28591-1-PBS

Source:

Rabbit

Isotype:

IgG

Immunogen Catalog Number:

AG29687

GenBank Accession Number:

NM\_145640

GeneID (NCBI):

80833

UNIPROT ID:

O95236

Full Name:

apolipoprotein L, 3

Calculated MW:

44 kDa

Observed MW:

44 kDa

Purification Method:

Antigen affinity purification

## Applications

Tested Applications:

WB, Indirect ELISA

Species Specificity:

human

## Background Information

Apolipoprotein L3 (APOL3) is a member of the apolipoprotein L gene family, and it is present in a cluster with other family members on chromosome 22. APOL3 is localized in the cytoplasm and plays a central role in cholesterol transport, affecting the movement of lipids, including cholesterol, and allowing the binding of lipids to organelles.

## Storage

Storage:

Store at -80°C.

**The product is shipped with ice packs. Upon receipt, store it immediately at -80°C**

Storage Buffer:

PBS only, pH7.3

For technical support and original validation data for this product please contact:

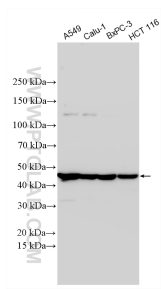
T: 4006900926

E: [Proteintech-CN@ptglab.com](mailto:Proteintech-CN@ptglab.com)

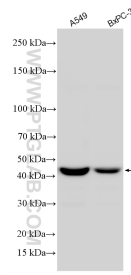
W: [ptgcn.com](http://ptgcn.com)

**This product is exclusively available under Proteintech Group brand and is not available to purchase from any other manufacturer.**

## Selected Validation Data



Various lysates were subjected to SDS PAGE followed by western blot with 28591-1-AP (APOL3 antibody) at dilution of 1:3000 incubated at room temperature for 1.5 hours. This data was developed using the same antibody clone with 28591-1-PBS in a different storage buffer formulation.



Various lysates were subjected to SDS PAGE followed by western blot with 28591-1-AP (APOL3 antibody) at dilution of 1:3000 incubated at room temperature for 1.5 hours. This data was developed using the same antibody clone with 28591-1-PBS in a different storage buffer formulation.