

For Research Use Only

# FUNDC1 Polyclonal antibody

Catalog Number: 28519-1-AP

Featured Product

2 Publications



## Basic Information

**Catalog Number:**

28519-1-AP

**Size:**

600 µg/ml

**Source:**

Rabbit

**Isotype:**

IgG

**Immunogen Catalog Number:**

AG29358

**GenBank Accession Number:**

BC042813

**GeneID (NCBI):**

139341

**UNIPROT ID:**

Q8IVP5

**Full Name:**

FUN14 domain containing 1

**Calculated MW:**

155 aa, 17 kDa

**Observed MW:**

17 kDa

**Purification Method:**

Antigen affinity purification

**Recommended Dilutions:**

WB 1:5000-1:20000

## Applications

**Tested Applications:**

WB, ELISA

**Cited Applications:**

WB

**Species Specificity:**

Human, mouse, rat

**Cited Species:**

human, mouse

**Positive Controls:**

WB : RAW 264.7 cells, RAW 264, .7 cells, mouse brain tissue, mouse liver tissue, rat brain tissue, rat liver tissue, C6 cells

## Background Information

FUNDC1 is a novel mitochondrial-associated membrane (MAM) protein, enriched at the MAM by interacting with the ER resident protein CANX (calnexin) under hypoxia. As mitophagy proceeds, it dissociates from CANX and preferably recruits DNM1L/DRP1 to drive mitochondrial fission in response to hypoxic stress.

## Notable Publications

Author	Pubmed ID	Journal	Application
Limin Shi	38469619	Clin Sci (Lond)	WB
Hong Chen	38320454	Redox Biol	WB

## Storage

**Storage:**

Store at -20°C. Stable for one year after shipment.

**Storage Buffer:**

PBS with 0.02% sodium azide and 50% glycerol pH 7.3.

Aliquoting is unnecessary for -20°C storage

For technical support and original validation data for this product please contact:

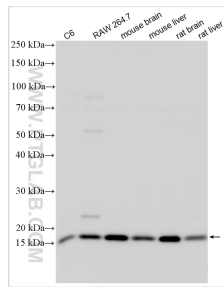
T: 4006900926

E: [Proteintech-CN@ptglab.com](mailto:Proteintech-CN@ptglab.com)

W: [ptgcn.com](http://ptgcn.com)

**This product is exclusively available under Proteintech Group brand and is not available to purchase from any other manufacturer.**

## Selected Validation Data



Various lysates were subjected to SDS PAGE followed by western blot with 28519-1-AP (FUNDC1 antibody) at dilution of 1:40000 incubated at room temperature for 1.5 hours.