

For Research Use Only

# CRBN Polyclonal antibody, PBS Only

Catalog Number: 28494-1-PBS

Featured Product



## Basic Information

Catalog Number:

28494-1-PBS

Size:

1 mg/ml

Source:

Rabbit

Isotype:

IgG

Immunogen Catalog Number:

AG29353

GenBank Accession Number:

BC017419

GeneID (NCBI):

51185

UNIPROT ID:

Q96SW2

Full Name:

cereblon

Calculated MW:

442 aa, 51 kDa

Observed MW:

51 kDa

Purification Method:

Antigen affinity purification

## Applications

Tested Applications:

WB, IHC, IF/ICC, Indirect ELISA

Species Specificity:

human, mouse, rat

## Background Information

CRBN plays an important role in assembly and surface expression of functional BK(Ca) channels. The mutation of human cereblon gene (CRBN) is related with mild mental retardation, and causes ARNSID (nonsyndromal intellectual disability) by disturbing the developmental regulation of BK(Ca) in brain regions that are critical for memory and learning. CRBN is also identified as important thalidomide-binding protein for limb outgrowth in zebrafish and chicks. It can be detected a band above 51 kDa (maybe 55 kDa) in HT22 cells (PMID: 21232561).

## Storage

Storage:

Store at -80°C.

The product is shipped with ice packs. Upon receipt, store it immediately at -80°C

Storage Buffer:

PBS Only

For technical support and original validation data for this product please contact:

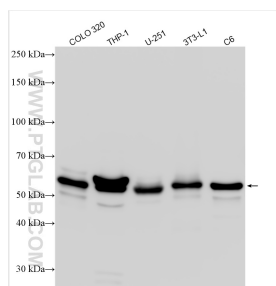
T: 4006900926

E: [Proteintech-CN@ptglab.com](mailto:Proteintech-CN@ptglab.com)

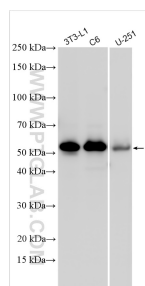
W: [ptgcn.com](http://ptgcn.com)

This product is exclusively available under Proteintech Group brand and is not available to purchase from any other manufacturer.

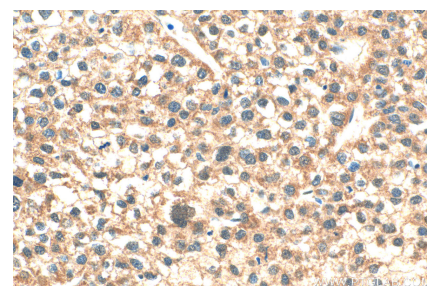
## Selected Validation Data



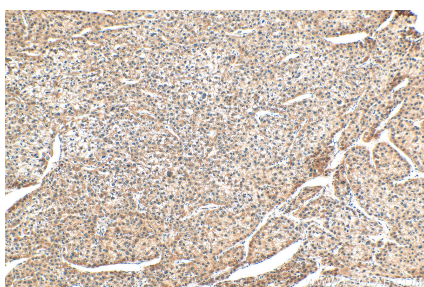
Various lysates were subjected to SDS PAGE followed by western blot with 28494-1-AP (CRBN antibody) at dilution of 1:3000 incubated at room temperature for 1.5 hours. This data was developed using the same antibody clone with 28494-1-PBS in a different storage buffer formulation.



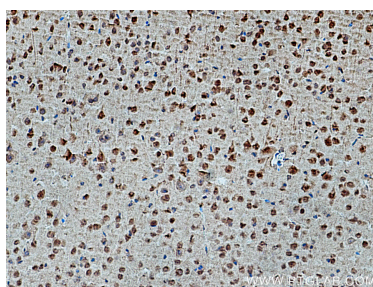
Various lysates were subjected to SDS PAGE followed by western blot with 28494-1-AP (CRBN antibody) at dilution of 1:4000 incubated at room temperature for 1.5 hours. This data was developed using the same antibody clone with 28494-1-PBS in a different storage buffer formulation.



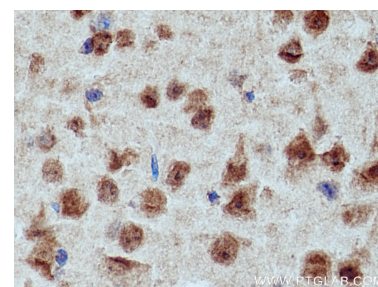
Immunohistochemical analysis of paraffin-embedded human liver cancer tissue slide using 28494-1-AP (CRBN antibody) at dilution of 1:400 (under 40x lens). Heat mediated antigen retrieval with Tris-EDTA buffer (pH 9.0). This data was developed using the same antibody clone with 28494-1-PBS in a different storage buffer formulation.



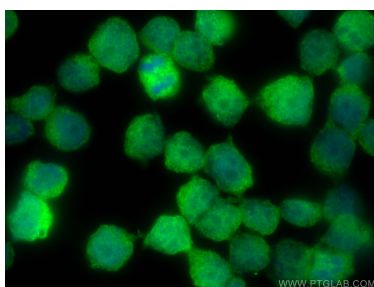
Immunohistochemical analysis of paraffin-embedded human liver cancer tissue slide using 28494-1-AP (CRBN antibody) at dilution of 1:400 (under 10x lens). Heat mediated antigen retrieval with Tris-EDTA buffer (pH 9.0). This data was developed using the same antibody clone with 28494-1-PBS in a different storage buffer formulation.



Immunohistochemical analysis of paraffin-embedded mouse brain tissue slide using 28494-1-AP (CRBN antibody) at dilution of 1:200 (under 10x lens). Heat mediated antigen retrieval with Tris-EDTA buffer (pH 9.0). This data was developed using the same antibody clone with 28494-1-PBS in a different storage buffer formulation.



Immunohistochemical analysis of paraffin-embedded mouse brain tissue slide using 28494-1-AP (CRBN antibody) at dilution of 1:200 (under 40x lens). Heat mediated antigen retrieval with Tris-EDTA buffer (pH 9.0). This data was developed using the same antibody clone with 28494-1-PBS in a different storage buffer formulation.



Immunofluorescent analysis of (4% PFA) fixed COLO 320 cells using CRBN antibody (28494-1-AP) at dilution of 1:200 and Multi-rAb CoraLite® Plus 488-Goat Anti-Rabbit Recombinant Secondary Antibody (H+L) (RGAR002). This data was developed using the same antibody clone with 28494-1-PBS in a different storage buffer formulation.