

For Research Use Only

# GAT1 Polyclonal antibody

Catalog Number: 28488-1-AP **4 Publications**



## Basic Information

**Catalog Number:**

28488-1-AP

**Size:**

1000 µg/ml

**Source:**

Rabbit

**Isotype:**

IgG

**Immunogen Catalog Number:**

AG29712

**GenBank Accession Number:**

BC033904

**GeneID (NCBI):**

6529

**UNIPROT ID:**

P30531

**Full Name:**

solute carrier family 6  
(neurotransmitter transporter, GABA),  
member 1

**Calculated MW:**

67 kDa

**Observed MW:**

42 kDa

**Purification Method:**

Antigen affinity purification

**Recommended Dilutions:**

WB 1:500-1:2000

IHC 1:50-1:500

## Applications

**Tested Applications:**

IHC, WB, ELISA

**Cited Applications:**

FC, WB

**Species Specificity:**

Human, Mouse, Rat

**Cited Species:**

mouse

**Note-IHC: suggested antigen retrieval with  
TE buffer pH 9.0; (\*) Alternatively, antigen  
retrieval may be performed with citrate  
buffer pH 6.0**

**Positive Controls:**

WB : mouse brain tissue, rat brain tissue

IHC : mouse cerebellum tissue, mouse brain tissue

## Background Information

### Notable Publications

Author	Pubmed ID	Journal	Application
Qi Shen	35199454	Aging Cell	FC
Xiao-Hui Tang	36565851	Neuropharmacology	WB
Haijun Bao	38105184	J Exp Clin Cancer Res	WB

## Storage

**Storage:**

Store at -20°C. Stable for one year after shipment.

**Storage Buffer:**

PBS with 0.02% sodium azide and 50% glycerol pH 7.3.

Aliquoting is unnecessary for -20°C storage

For technical support and original validation data for this product please contact:

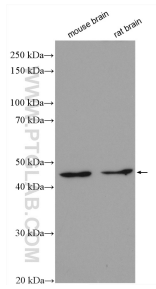
T: 4006900926

E: Proteintech-CN@ptglab.com

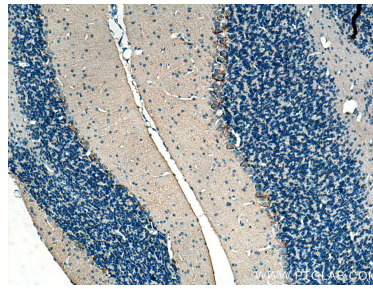
W: ptgcn.com

**This product is exclusively available under Proteintech Group brand and is not available to purchase from any other manufacturer.**

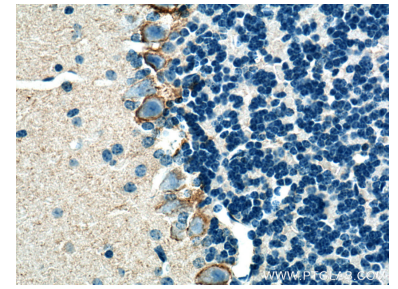
## Selected Validation Data



Various lysates were subjected to SDS PAGE followed by western blot with 28488-1-AP (SLC6A1 antibody) at dilution of 1:1000 incubated at room temperature for 1.5 hours.



Immunohistochemical analysis of paraffin-embedded mouse cerebellum tissue slide using 28488-1-AP (SLC6A1 antibody) at dilution of 1:200 (under 10x lens). Heat mediated antigen retrieval with Tris-EDTA buffer (pH 9.0).



Immunohistochemical analysis of paraffin-embedded mouse cerebellum tissue slide using 28488-1-AP (SLC6A1 antibody) at dilution of 1:200 (under 40x lens). Heat mediated antigen retrieval with Tris-EDTA buffer (pH 9.0).