

For Research Use Only

STEAP3 Polyclonal antibody, PBS Only

Catalog Number: 28478-1-PBS



Basic Information

Catalog Number:

28478-1-PBS

Source:

Rabbit

Isotype:

IgG

Immunogen Catalog Number:

AG29528

GenBank Accession Number:

BC042150

GeneID (NCBI):

55240

UNIPROT ID:

Q658P3

Full Name:

STEAP family member 3

Calculated MW:

488 aa, 55 kDa

Observed MW:

45-50 kDa

Purification Method:

Antigen affinity purification

Applications

Tested Applications:

WB, IHC, IF/ICC, Indirect ELISA

Species Specificity:

human, mouse, rat

Background Information

STEAP3 (Six-Transmembrane Epithelial Antigen of Prostate 3) is also named as TSAP6, Dudulin-2 and pHyde, and belongs to the STEAP family. STEAP3 is a member of the STEAP family and is composed of a six-transmembrane domain at the COOH-terminal domain and a cytoplasmic N-terminal oxidoreductase domain, which is essential for iron and copper uptake (PMID:16227996). STEAP3 contains a functional p53-binding site in its promoter and can be upregulated following p53 activation to enhance cell death in myeloid leukemia cell line and breast cancer cells (PMID: 18617898). By interacting with Nix, a pro-apoptotic Bcl-2 family member, and Myt1 kinase, a negative regulator of the G2/M transition, STEAP3 overexpression promotes apoptosis and inhibits G2/M transition in cell cycle progression (PMID: 12606722, PMID: 10504341).

Storage

Storage:

Store at -80°C.

The product is shipped with ice packs. Upon receipt, store it immediately at -80°C

Storage Buffer:

PBS only, pH7.3

For technical support and original validation data for this product please contact:

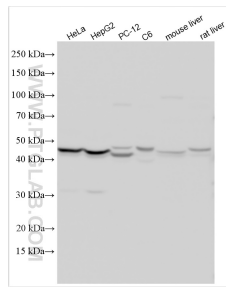
T: 4006900926

E: Proteintech-CN@ptglab.com

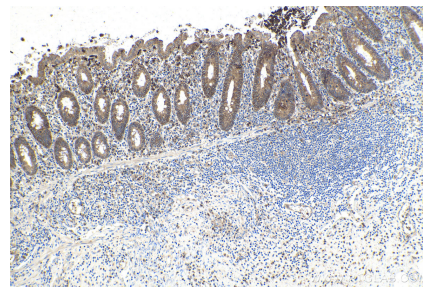
W: ptgcn.com

This product is exclusively available under Proteintech Group brand and is not available to purchase from any other manufacturer.

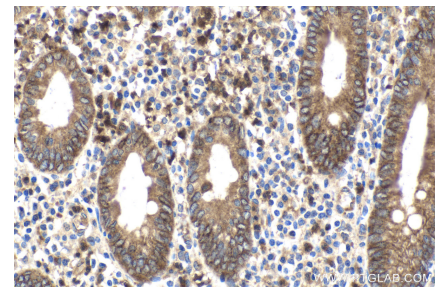
Selected Validation Data



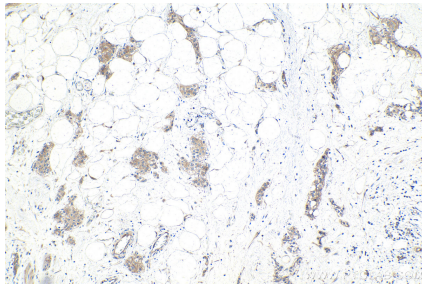
Various lysates were subjected to SDS PAGE followed by western blot with 28478-1-AP (STEAP3 antibody) at dilution of 1:2000 incubated at room temperature for 1.5 hours. This data was developed using the same antibody clone with 28478-1-PBS in a different storage buffer formulation.



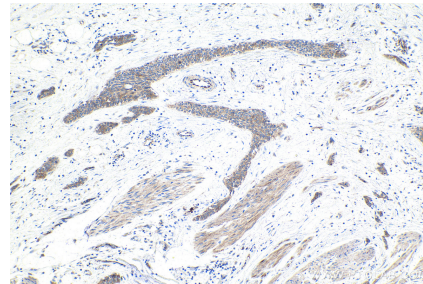
Immunohistochemical analysis of paraffin-embedded human appendicitis tissue slide using 28478-1-AP (STEAP3 antibody) at dilution of 1:1000 (under 10x lens). Heat mediated antigen retrieval with Tris-EDTA buffer (pH 9.0). This data was developed using the same antibody clone with 28478-1-PBS in a different storage buffer formulation.



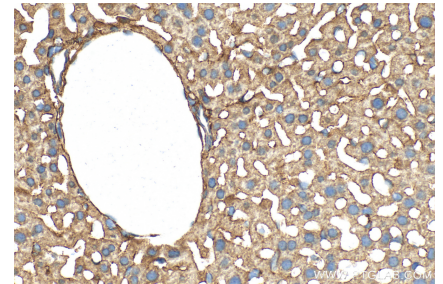
Immunohistochemical analysis of paraffin-embedded human appendicitis tissue slide using 28478-1-AP (STEAP3 antibody) at dilution of 1:1000 (under 40x lens). Heat mediated antigen retrieval with Tris-EDTA buffer (pH 9.0). This data was developed using the same antibody clone with 28478-1-PBS in a different storage buffer formulation.



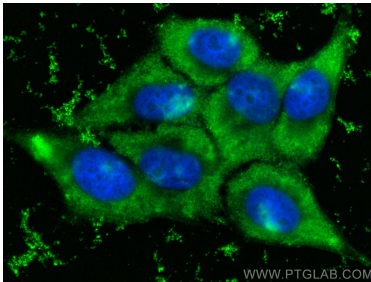
Immunohistochemical analysis of paraffin-embedded human urothelial carcinoma tissue slide using 28478-1-AP (STEAP3 antibody) at dilution of 1:1000 (under 10x lens). Heat mediated antigen retrieval with Tris-EDTA buffer (pH 9.0). This data was developed using the same antibody clone with 28478-1-PBS in a different storage buffer formulation.



Immunohistochemical analysis of paraffin-embedded human urothelial carcinoma tissue slide using 28478-1-AP (STEAP3 antibody) at dilution of 1:1000 (under 10x lens). Heat mediated antigen retrieval with Tris-EDTA buffer (pH 9.0). This data was developed using the same antibody clone with 28478-1-PBS in a different storage buffer formulation.



Immunohistochemical analysis of paraffin-embedded mouse liver tissue slide using 28478-1-AP (STEAP3 antibody) at dilution of 1:1000 (under 40x lens). Heat mediated antigen retrieval with Tris-EDTA buffer (pH 9.0). This data was developed using the same antibody clone with 28478-1-PBS in a different storage buffer formulation.



Immunofluorescent analysis of (-20°C Ethanol) fixed HepG2 cells using STEAP3 antibody (28478-1-AP) at dilution of 1:400 and CoraLite® 488-Conjugated AffiniPure Goat Anti-Rabbit IgG(H+L). This data was developed using the same antibody clone with 28478-1-PBS in a different storage buffer formulation.