

For Research Use Only

# PHF17 Polyclonal antibody, PBS Only

Catalog Number: 28472-1-PBS

Featured Product



## Basic Information

Catalog Number:

28472-1-PBS

Source:

Rabbit

Isotype:

IgG

Immunogen Catalog Number:

AG29675

GenBank Accession Number:

BC032376

GeneID (NCBI):

79960

UNIPROT ID:

Q6IE81

Full Name:

PHD finger protein 17

Calculated MW:

96 kDa

Observed MW:

65 kDa, 100-110 kDa

Purification Method:

Antigen affinity purification

## Applications

Tested Applications:

WB, IF/ICC, Indirect ELISA

Species Specificity:

human

## Background Information

PHF17, also named as JADE1 and KIAA1807, belongs to the JADE family. PHF17 codes for the Jade-1 protein. This protein interacts with histone acetyltransferase HBO1 and promotes histone acetylation in chromatin to regulate DNA replication and gene transcription. PHF17 is mostly expressed in the small intestine, prostate, mammary gland and kidney. PHF17 is involved in mitosis, meiosis and tumor suppression (PMID: 28134766). PHF17 has 3 isoforms with the molecular mass of 58 kDa and 94-96 kDa. With modification, the MW of PHF17 may be migrated to about 65 kDa and 100-110 kDa.

## Storage

Storage:

Store at -80°C.

**The product is shipped with ice packs. Upon receipt, store it immediately at -80°C**

Storage Buffer:

PBS only, pH7.3

For technical support and original validation data for this product please contact:

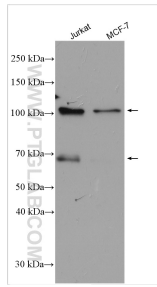
T: 4006900926

E: [Proteintech-CN@ptglab.com](mailto:Proteintech-CN@ptglab.com)

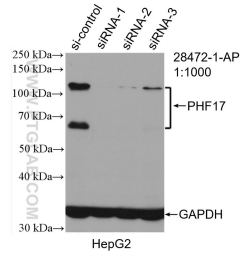
W: [ptgcn.com](http://ptgcn.com)

**This product is exclusively available under Proteintech Group brand and is not available to purchase from any other manufacturer.**

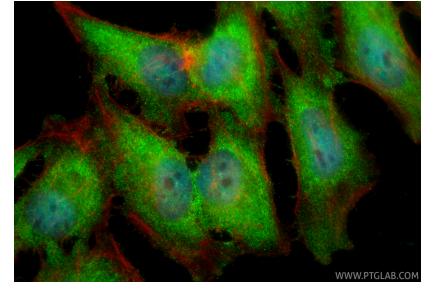
## Selected Validation Data



Various lysates were subjected to SDS PAGE followed by western blot with 28472-1-AP (PHF17 antibody) at dilution of 1:2500 incubated at room temperature for 1.5 hours. This data was developed using the same antibody clone with 28472-1-PBS in a different storage buffer formulation.



WB result of PHF17 antibody (28472-1-AP; 1:1000; incubated at room temperature for 1.5 hours) with sh-Control and sh-PHF17 transfected HepG2 cells. This data was developed using the same antibody clone with 28472-1-PBS in a different storage buffer formulation.



Immunofluorescent analysis of (4% PFA) fixed HeLa cells using PHF17 antibody (28472-1-AP) at dilution of 1:400 and CoraLite®488-Conjugated Goat Anti-Rabbit IgG(H+L) (SA00013-2), CL594-phalloidin (red). This data was developed using the same antibody clone with 28472-1-PBS in a different storage buffer formulation.