

For Research Use Only

# PHF17 Polyclonal antibody

Catalog Number: 28472-1-AP

Featured Product



## Basic Information

<b>Catalog Number:</b> 28472-1-AP	<b>GenBank Accession Number:</b> BC032376	<b>Purification Method:</b> Antigen affinity purification
<b>Size:</b> 800 µg/ml	<b>GeneID (NCBI):</b> 79960	<b>Recommended Dilutions:</b> WB 1:1000-1:5000 IF 1:50-1:500
<b>Source:</b> Rabbit	<b>UNIPROT ID:</b> Q6IE81	
<b>Isotype:</b> IgG	<b>Full Name:</b> PHD finger protein 17	
<b>Immunogen Catalog Number:</b> AG29675	<b>Calculated MW:</b> 96 kDa	
	<b>Observed MW:</b> 65, 100-110 kDa	

## Applications

<b>Tested Applications:</b> IF/ICC, WB, ELISA	<b>Positive Controls:</b> WB : Jurkat cells, HepG2 cells, A549 cells, MCF-7 cells IF : HeLa cells,
<b>Species Specificity:</b> Human	

## Background Information

PHF17, also named as JADE1 and KIAA1807, belongs to the JADE family. PHF17 codes for the Jade-1 protein. This protein interacts with histone acetyltransferase HBO1 and promotes histone acetylation in chromatin to regulate DNA replication and gene transcription. PHF17 is mostly expressed in the small intestine, prostate, mammary gland and kidney. PHF17 is involved in mitosis, meiosis and tumor suppression (PMID: 28134766). PHF17 has 3 isoforms with the molecular mass of 58 and 94-96 kDa. With modification, the MW of PHF17 may be migrated to about 65 and 100-110 kDa.

## Storage

**Storage:**  
Store at -20°C. Stable for one year after shipment.  
**Storage Buffer:**  
PBS with 0.02% sodium azide and 50% glycerol pH 7.3.  
Aliquoting is unnecessary for -20°C storage

For technical support and original validation data for this product please contact:

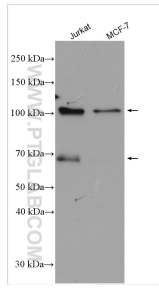
T: 4006900926

E: Proteintech-CN@ptglab.com

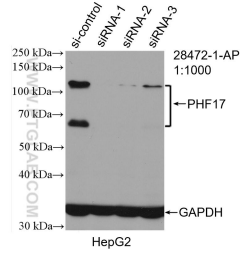
W: ptgcn.com

This product is exclusively available under Proteintech Group brand and is not available to purchase from any other manufacturer.

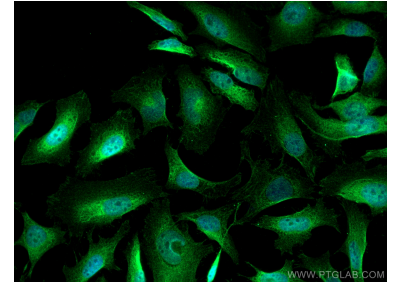
## Selected Validation Data



Various lysates were subjected to SDS PAGE followed by western blot with 28472-1-AP (PHF17 antibody) at dilution of 1:2500 incubated at room temperature for 1.5 hours.



WB result of PHF17 antibody (28472-1-AP; 1:1000; incubated at room temperature for 1.5 hours) with sh-Control and sh-PHF17 transfected HepG2 cells.



Immunofluorescent analysis of (4% PFA) fixed HeLa cells using PHF17 antibody (28472-1-AP) at dilution of 1:200 and CoraLite®488-Conjugated AffiniPure Goat Anti-Rabbit IgG(H+L).