

For Research Use Only

HPF1 Polyclonal antibody

Catalog Number: 28456-1-AP



Basic Information

Catalog Number:

28456-1-AP

Size:

450 ug/ml

Source:

Rabbit

Isotype:

IgG

Immunogen Catalog Number:

AG29377

GenBank Accession Number:

BC010367

GeneID (NCBI):

54969

UNIPROT ID:

Q9NWX4

Full Name:

chromosome 4 open reading frame 27

Calculated MW:

346 aa, 39 kDa

Observed MW:

39 kDa

Purification Method:

Antigen affinity purification

Recommended Dilutions:

WB 1:2000-1:12000

IF/ICC 1:200-1:800

Applications

Tested Applications:

WB, IF/ICC, ELISA

Species Specificity:

human

Positive Controls:

WB : Jurkat cells, MOLT-4 cells

IF/ICC : A431 cells,

Background Information

HPF1 is also known as C4orf27 and belongs to the HPF1 family. HPF1 is a novel interacting component of PARP1 complex that plays an important role in PARP1-dependent ADP-ribosylation signaling in the DNA damage response and the maintenance of genome stability (PMID: 29549427). The calculated molecular weight of HPF1 is 39 kDa.

Storage

Storage:

Store at -20°C. Stable for one year after shipment.

Storage Buffer:

PBS with 0.02% sodium azide and 50% glycerol pH 7.3.

Aliquoting is unnecessary for -20°C storage

For technical support and original validation data for this product please contact:

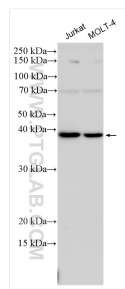
T: 4006900926

E: Proteintech-CN@ptglab.com

W: ptgcn.com

This product is exclusively available under Proteintech Group brand and is not available to purchase from any other manufacturer.

Selected Validation Data



Immunofluorescent analysis of (-20°C Methanol) fixed A431 cells using HPF1 antibody (28456-1-AP) at dilution of 1:400 and CoraLite®488-Conjugated AffiniPure Goat Anti-Rabbit IgG(H+L) (SA00013-2).

Various lysates were subjected to SDS PAGE followed by western blot with 28456-1-AP (HPF1 antibody) at dilution of 1:6000 incubated at room temperature for 1.5 hours.