

For Research Use Only

SGK1 Polyclonal antibody

Catalog Number: 28454-1-AP

Featured Product

7 Publications



Basic Information

Catalog Number:

28454-1-AP

Size:

500 ug/ml

Source:

Rabbit

Isotype:

IgG

Immunogen Catalog Number:

AG29420

GenBank Accession Number:

BC001263

GeneID (NCBI):

6446

UNIPROT ID:

O00141

Full Name:

serum/glucocorticoid regulated kinase 1

Calculated MW:

431 aa, 49 kDa

Observed MW:

42-50 kDa

Purification Method:

Antigen affinity purification

Recommended Dilutions:

WB 1:500-1:1000

IHC 1:50-1:500

IF/ICC 1:200-1:400

Applications

Tested Applications:

WB, IHC, IF/ICC, ELISA

Cited Applications:

WB

Species Specificity:

human, mouse

Cited Species:

human, mouse

Note-IHC: suggested antigen retrieval with TE buffer pH 9.0; (*) Alternatively, antigen retrieval may be performed with citrate buffer pH 6.0

Positive Controls:

WB : HeLa cells, HepG2 cells

IHC : mouse kidney tissue, human liver cancer tissue

IF/ICC : HepG2 cells, SH-SY5Y cells

Background Information

Serum- and glucocorticoid-induced kinase 1 (SGK1), also named as SGK, is a S/T protein kinase that belongs to the AGC (cAMP-dependent, cGMP-dependent, and protein kinase C) kinase family. It is expressed in many cell types and participates in numerous cellular processes and it is ubiquitinated and degraded at the ER membrane (PMID: 16847254). The N-terminal motif of SGK1 is critical for its ubiquitination and degradation (PMID: 16817852). SGK and Akt are likely to phosphorylate related substrates, as they share a similar consensus phosphorylation site (RXRXXS/T) (PMID: 11154281). It has 5 isoforms produced by alternative promoter usage and alternative splicing.

Notable Publications

Author	Pubmed ID	Journal	Application
Xiao Han	35588785	J Biol Chem	WB
Qiongfen Chen	35955931	Int J Mol Sci	WB
Wei Ye	39674392	Cell Signal	WB

Storage

Storage:

Store at -20°C. Stable for one year after shipment.

Storage Buffer:

PBS with 0.02% sodium azide and 50% glycerol pH 7.3.

Aliquoting is unnecessary for -20°C storage

For technical support and original validation data for this product please contact:

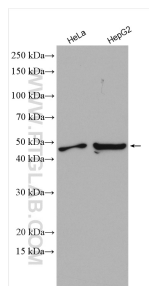
T: 4006900926

E: Proteintech-CN@ptglab.com

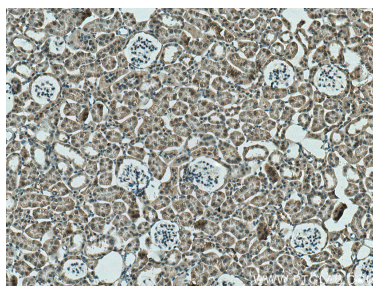
W: ptgcn.com

This product is exclusively available under Proteintech Group brand and is not available to purchase from any other manufacturer.

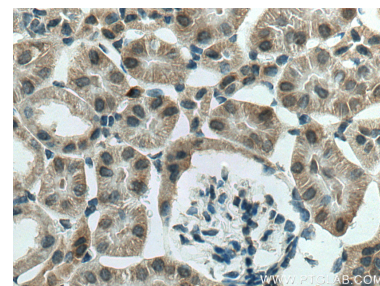
Selected Validation Data



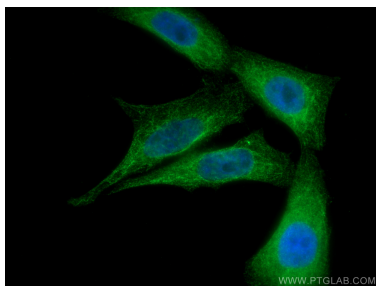
Various lysates were subjected to SDS PAGE followed by western blot with 28454-1-AP (SGK1 antibody) at dilution of 1:600 incubated at room temperature for 1.5 hours.



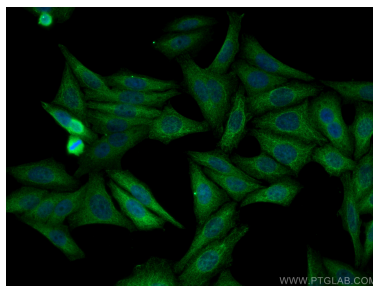
Immunohistochemical analysis of paraffin-embedded mouse kidney tissue slide using 28454-1-AP (SGK1 antibody) at dilution of 1:200 (under 10x lens). Heat mediated antigen retrieval with Tris-EDTA buffer (pH 9.0).



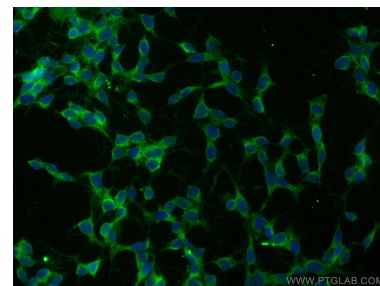
Immunohistochemical analysis of paraffin-embedded mouse kidney tissue slide using 28454-1-AP (SGK1 antibody) at dilution of 1:200 (under 40x lens). Heat mediated antigen retrieval with Tris-EDTA buffer (pH 9.0).



Immunofluorescent analysis of (4% PFA) fixed HepG2 cells using SGK1 antibody (28454-1-AP) at dilution of 1:400 and CoraLite® 488-Conjugated AffiniPure Goat Anti-Rabbit IgG(H+L).



Immunofluorescent analysis of (4% PFA) fixed HepG2 cells using SGK1 antibody (28454-1-AP) at dilution of 1:400 and CoraLite® 488-Conjugated AffiniPure Goat Anti-Rabbit IgG(H+L).



Immunofluorescent analysis of (4% PFA) fixed SH-SY5Y cells using SGK1 antibody (28454-1-AP) at dilution of 1:200 and CoraLite® 488-Conjugated AffiniPure Goat Anti-Rabbit IgG(H+L) (SA00013-2).