

For Research Use Only

Beta TRCP Polyclonal antibody

Catalog Number: 28393-1-AP



Basic Information

Catalog Number: 28393-1-AP	GenBank Accession Number: BC027994	Purification Method: Antigen affinity purification
Size: 800 µg/ml	GeneID (NCBI): 8945	Recommended Dilutions: WB 1:2000-1:10000 IHC 1:50-1:500 IF 1:200-1:800
Source: Rabbit	UNIPROT ID: Q9Y297	
Isotype: IgG	Full Name: beta-transducin repeat containing	
Immunogen Catalog Number: AG28739	Calculated MW: 605 aa, 69 kDa	
	Observed MW: 60-65 kDa	

Applications

Tested Applications:
IF/ICC, IHC, WB, ELISA

Species Specificity:
Human, Mouse, Rat

Note-IHC: suggested antigen retrieval with TE buffer pH 9.0; (*) Alternatively, antigen retrieval may be performed with citrate buffer pH 6.0

Positive Controls:

WB: HEK-293T cells, NIH/3T3 cells, U-251 cells, Ramos cells, mouse brain tissue, rat brain tissue

IHC: mouse testis tissue,

IF: MCF-7 cells,

Background Information

BTRC, also named as BTRCP, FBW1A, and FBXW1A, is an F-box family protein. It is a Substrate recognition component of an SCF (SKP1-CUL1-F-box protein) E3 ubiquitin-protein ligase complex which mediates the ubiquitination and subsequent proteasomal degradation of target proteins. BTRC targets many important proteins with diverse functions, such as p53, HRAS, NF-kappa-B p105 subunit, ATF4, SMAD3, SMAD4, CDC25A, DLG1, FBXO5, and the cell cycle checkpoint protein claspin, for ubiquitin-mediated degradation. It is required for the activation of NFkB-mediated transcription by IL1B, MAP3K14, MAP3K1, IKKB, and TNF. Required for proteolytic processing of GLI3.

Storage

Storage:
Store at -20°C. Stable for one year after shipment.
Storage Buffer:
PBS with 0.02% sodium azide and 50% glycerol pH 7.3.
Aliquoting is unnecessary for -20°C storage

For technical support and original validation data for this product please contact:

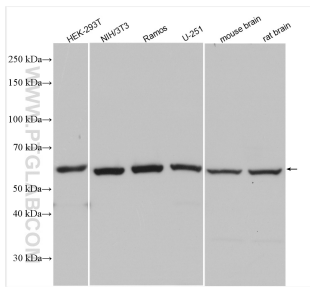
T: 4006900926

E: Proteintech-CN@ptglab.com

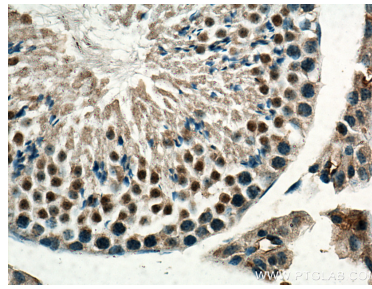
W: ptgcn.com

This product is exclusively available under Proteintech Group brand and is not available to purchase from any other manufacturer.

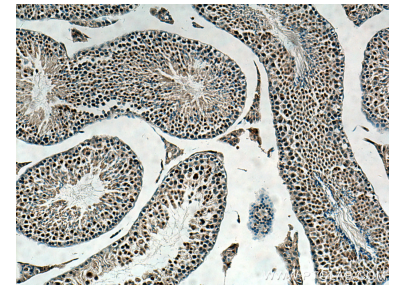
Selected Validation Data



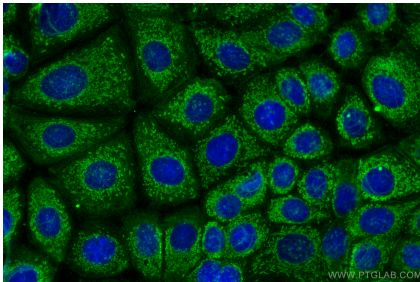
Various lysates were subjected to SDS PAGE followed by western blot with 28393-1-AP (Beta TRCP antibody) at dilution of 1:5000 and incubated at room temperature for 1.5 hours.



Immunohistochemical analysis of paraffin-embedded mouse testis tissue slide using 28393-1-AP (BETA-TRCP,BTRC antibody) at dilution of 1:200 (under 40x lens). Heat mediated antigen retrieval with Tris-EDTA buffer (pH 9.0).



Immunohistochemical analysis of paraffin-embedded mouse testis tissue slide using 28393-1-AP (BETA-TRCP,BTRC antibody) at dilution of 1:200 (under 10x lens). Heat mediated antigen retrieval with Tris-EDTA buffer (pH 9.0).



Immunofluorescent analysis of (-20°C Methanol) fixed MCF-7 cells using Beta TRCP antibody (28393-1-AP) at dilution of 1:400 and CoraLite@488-Conjugated AffiniPure Goat Anti-Rabbit IgG(H+L).