

For Research Use Only

GDF1 Polyclonal antibody

Catalog Number: 28345-1-AP



Basic Information

Catalog Number: 28345-1-AP	GenBank Accession Number: NM_001492	Purification Method: Antigen affinity purification
Size: 500 µg/ml	GeneID (NCBI): 2657	Recommended Dilutions: WB 1:500-1:1000
Source: Rabbit	UNIPROT ID: P27539	
Isotype: IgG	Full Name: growth differentiation factor 1	
Immunogen Catalog Number: AG28831	Calculated MW: 39 kDa	
	Observed MW: 39 kDa	

Applications

Tested Applications: WB, ELISA	Positive Controls: WB : fetal human brain tissue, mouse skeletal muscle tissue, rat skeletal muscle tissue
Species Specificity: Human, mouse, rat	

Background Information

GDF1 is a secreted ligand of the TGF-beta (transforming growth factor-beta) superfamily of proteins. Ligands of this family bind various TGF-beta receptors leading to recruitment and activation of SMAD family transcription factors that regulate gene expression. The encoded preproprotein is proteolytically processed to generate each subunit of the disulfide-linked homodimer. Studies in rodents suggest that this protein is involved in the establishment of left-right asymmetry in early embryogenesis and in neural development in later embryogenesis.

Storage

Storage:
Store at -20°C. Stable for one year after shipment.
Storage Buffer:
PBS with 0.02% sodium azide and 50% glycerol pH 7.3.
Aliquoting is unnecessary for -20°C storage

For technical support and original validation data for this product please contact:

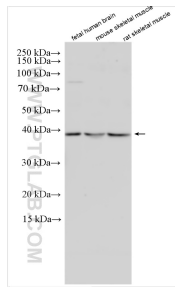
T: 4006900926

E: Proteintech-CN@ptglab.com

W: ptgcn.com

This product is exclusively available under Proteintech Group brand and is not available to purchase from any other manufacturer.

Selected Validation Data



Various lysates were subjected to SDS PAGE followed by western blot with 28345-1-AP (GDF1 antibody) at dilution of 1:600 incubated at room temperature for 1.5 hours.